

# **Enterprise GIS Steering Committee Meeting**

March 10, 2017

# Enterprise GIS Goals

One master central source of data for use across university faculty, staff, students, and with outside agencies

Allow multiple users to edit the same data sets concurrently

Decrease duplication and foster communication

Create lean, efficient business processes to enhance campus environment and culture



# Agenda

1. Welcome and introductions
2. Review Action Items from previous meeting
3. Review of Project list for Fiscal Year 2016-2017
4. Other Business
5. Next Meeting: September 2017

# Review Action Items

Send Committee Members Data Matrix, Presentation, and Video

Add Lauren Joyner to working group

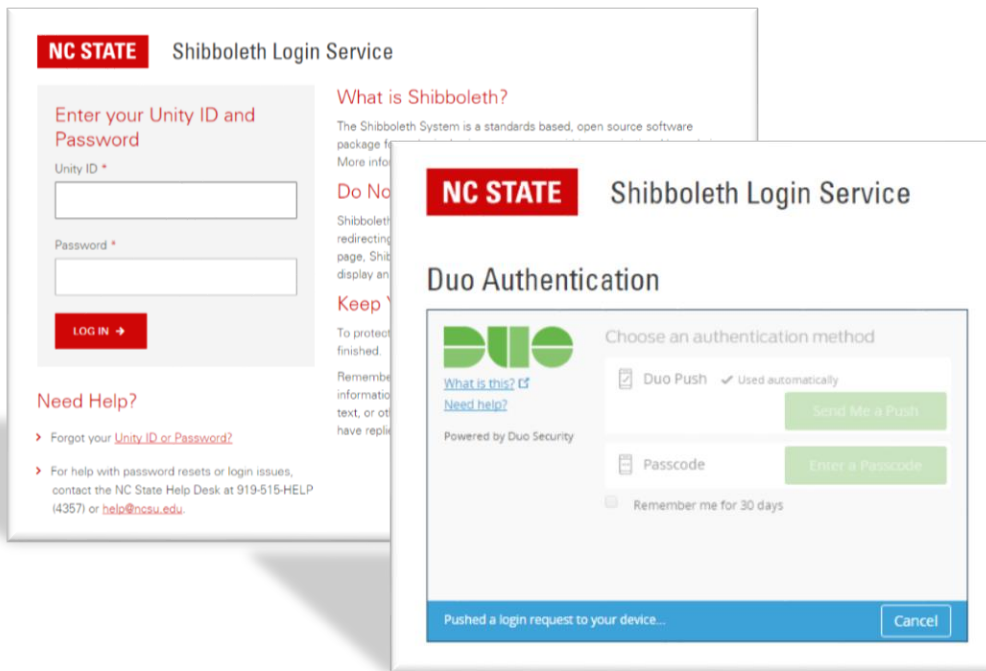
Add Wade Davis, Director HR Systems, to Steering Committee

Explore collaborative options with GIS Working Group, such as listserv, google group, forum, to share information with Steering Committee

Begin projects

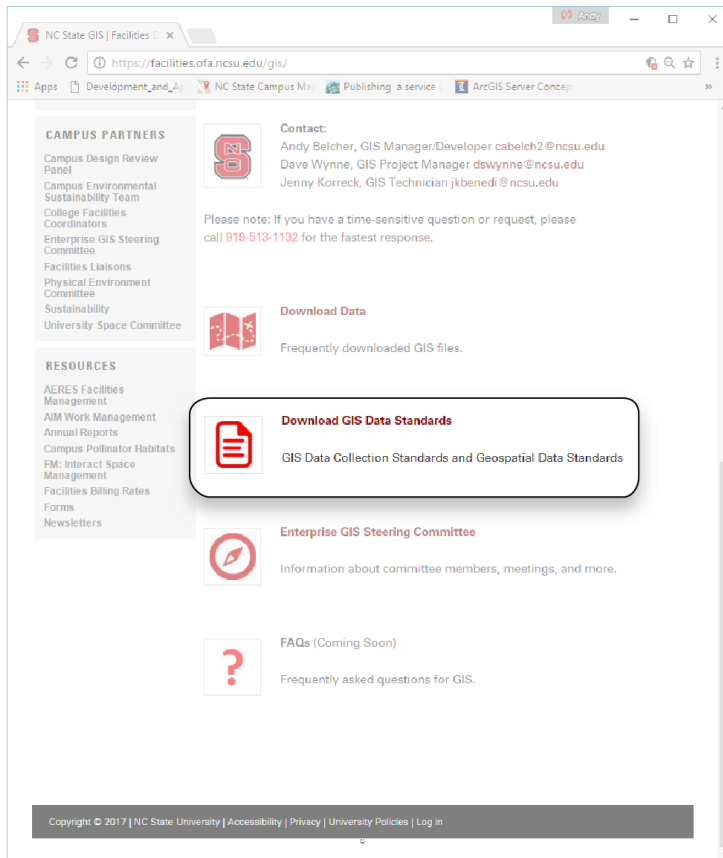
# Shibboleth Authentication

*Control user access based on already-existing NC State IT security framework, processes and attributes*



Data Services  
Web Applications  
Root Resources

# Develop and Enhance Standards

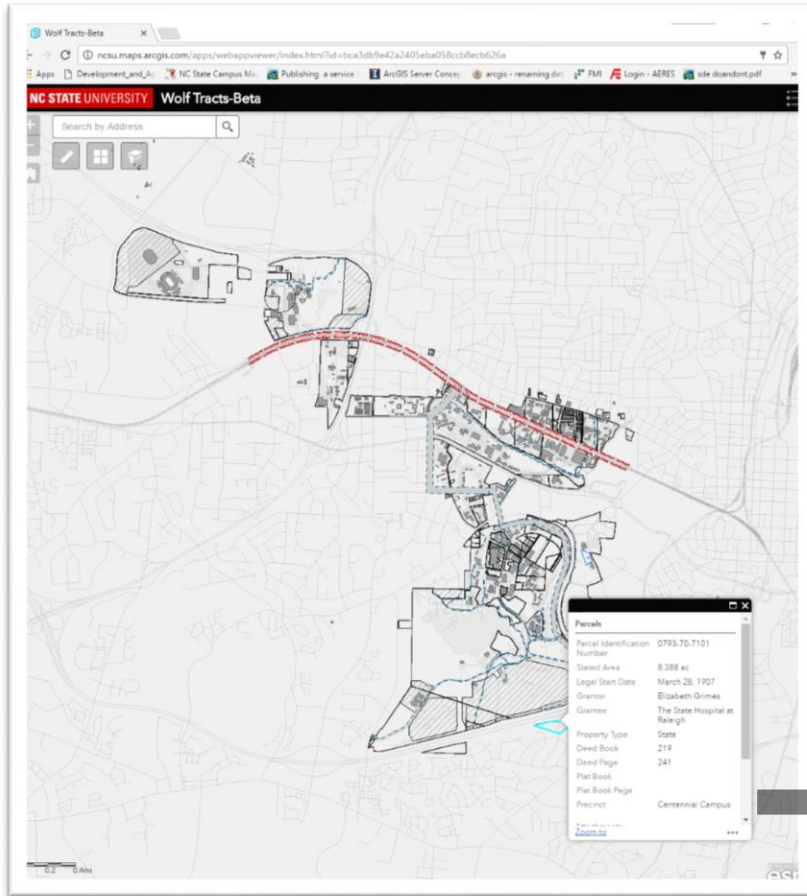


Publicly available for download

CPM project adoption  
**Exterior Lighting LED Conversion**

Evolving as industry and technology changes

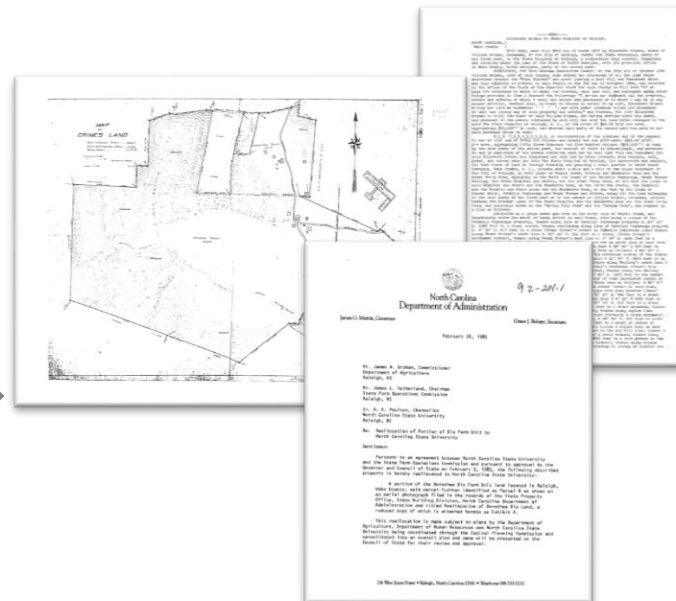
# Parcel Fabric Viewer



Web-based application

Data created and maintained internally by subject matter expert (SME)

SME-verified documents attached to parcels for In-application viewing



# Campus Map

*Vendor-led project to test conceptual transfer of Campus Map*



**ArcGIS Online**

Limited ownership

Requires outside/ITECS administration

“When available” admin response

Unknown systems framework

Full ownership

Enterprise GIS administration

“Full availability” admin response

Known systems framework



# Enterprise GIS – Utilities (Functional Requirements) Project Team

**NC STATE**

David Wynne – GIS Project Manager  
[dswynne@ncsu.edu](mailto:dswynne@ncsu.edu)



Laura Wilson – Project Manager  
[lwilson@esspassociates.com](mailto:lwilson@esspassociates.com)

**Subject Matter Experts: Enterprise GIS - Utilities**



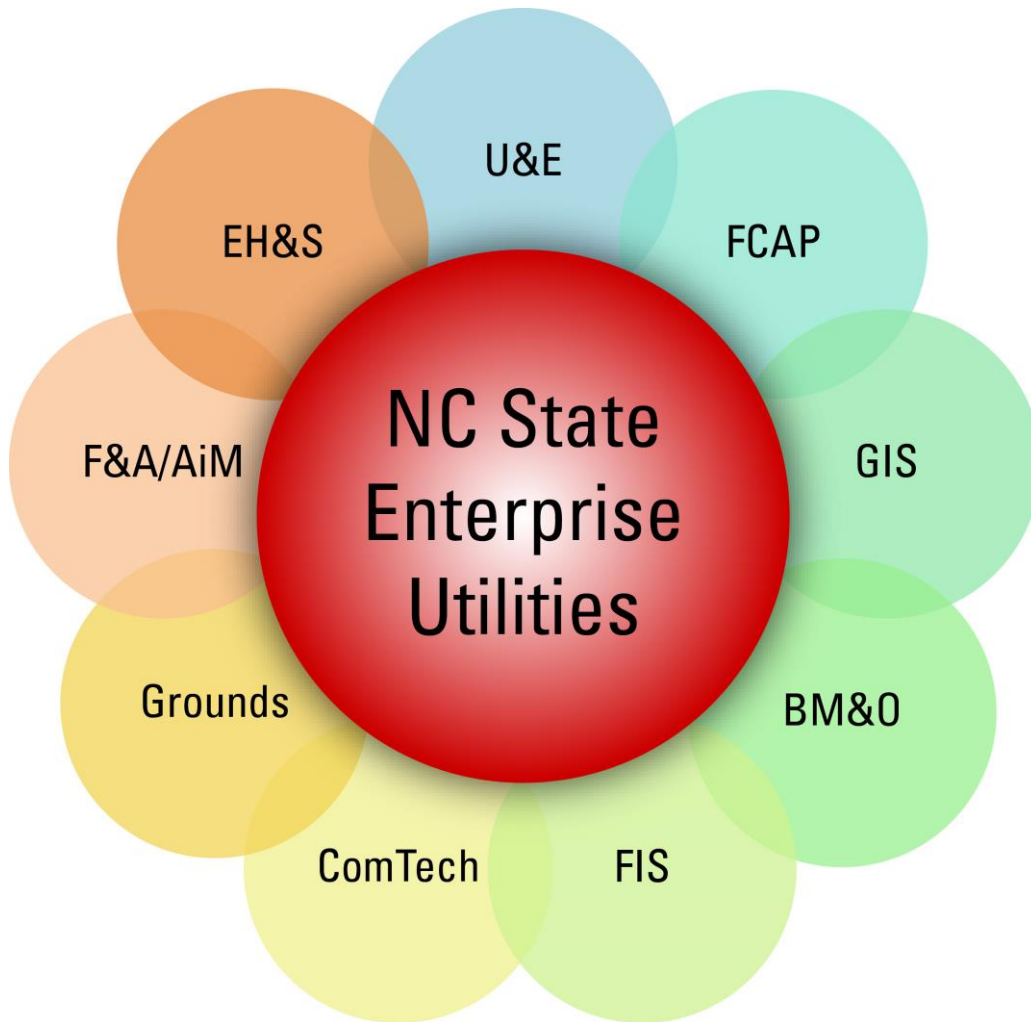
<http://gisinc.com/>



**esri** Partner Network  
Platinum



<http://sspinnovations.com/>



8 Discovery Workshops

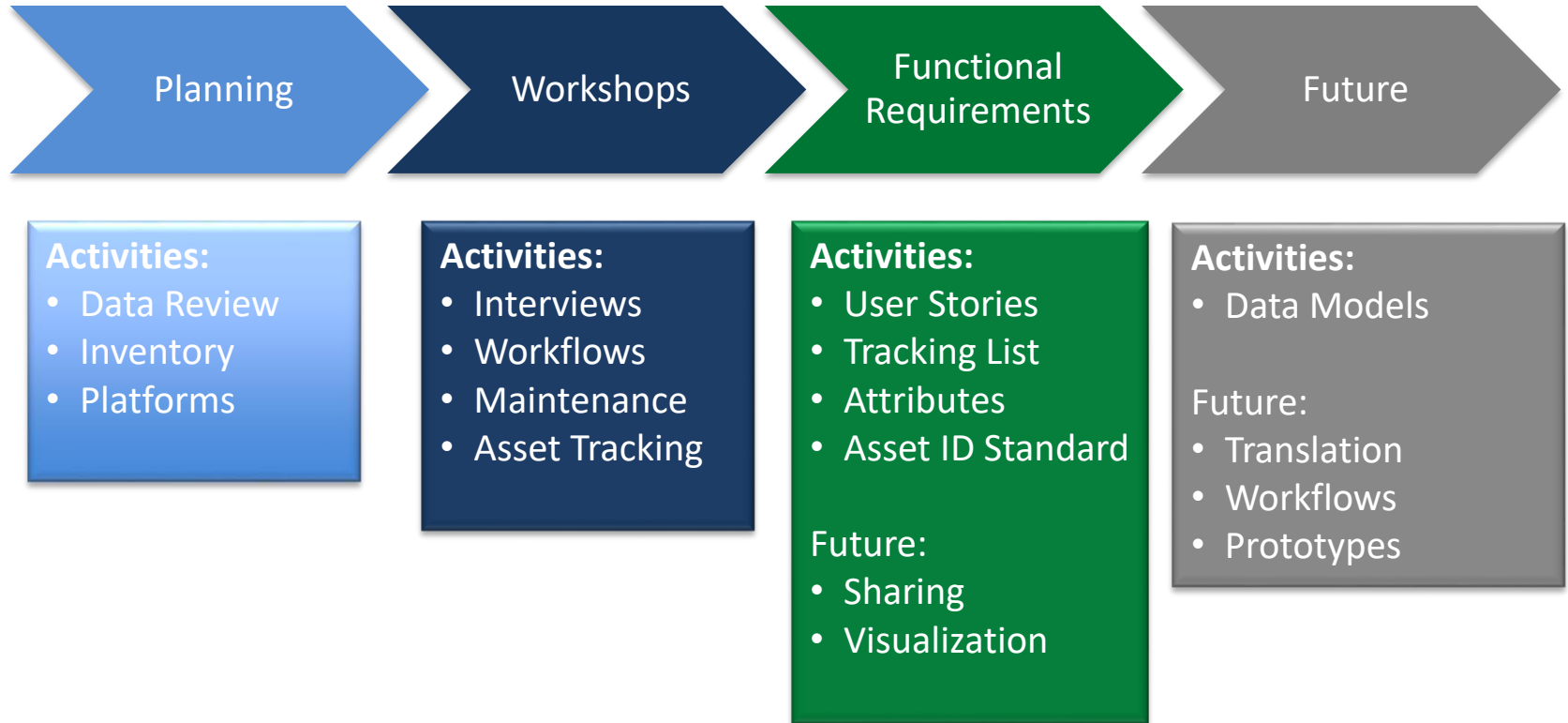
29 NC State Personnel Attended

9 Departments

3 Divisions

6 Vendor Led Experts

# Project Overview



# Resource Balance

Determining the most valuable items and the problem of resource allocation where there are financial and human constraints.



# Other Business

Next Meeting September 2017