

Enterprise GIS Steering Committee Meeting

February 26, 2018

Agenda

1. Welcome and Introductions
2. Action Item
3. Review Fiscal Year 2017-2018 Enterprise GIS implementation projects based on goals
4. Other Business
5. Next Meeting: August 2018

Action Item

Confirm order of next utility systems and present to the Enterprise GIS Steering Committee for approval.

Utilities: Pilot Project - Stormwater Model



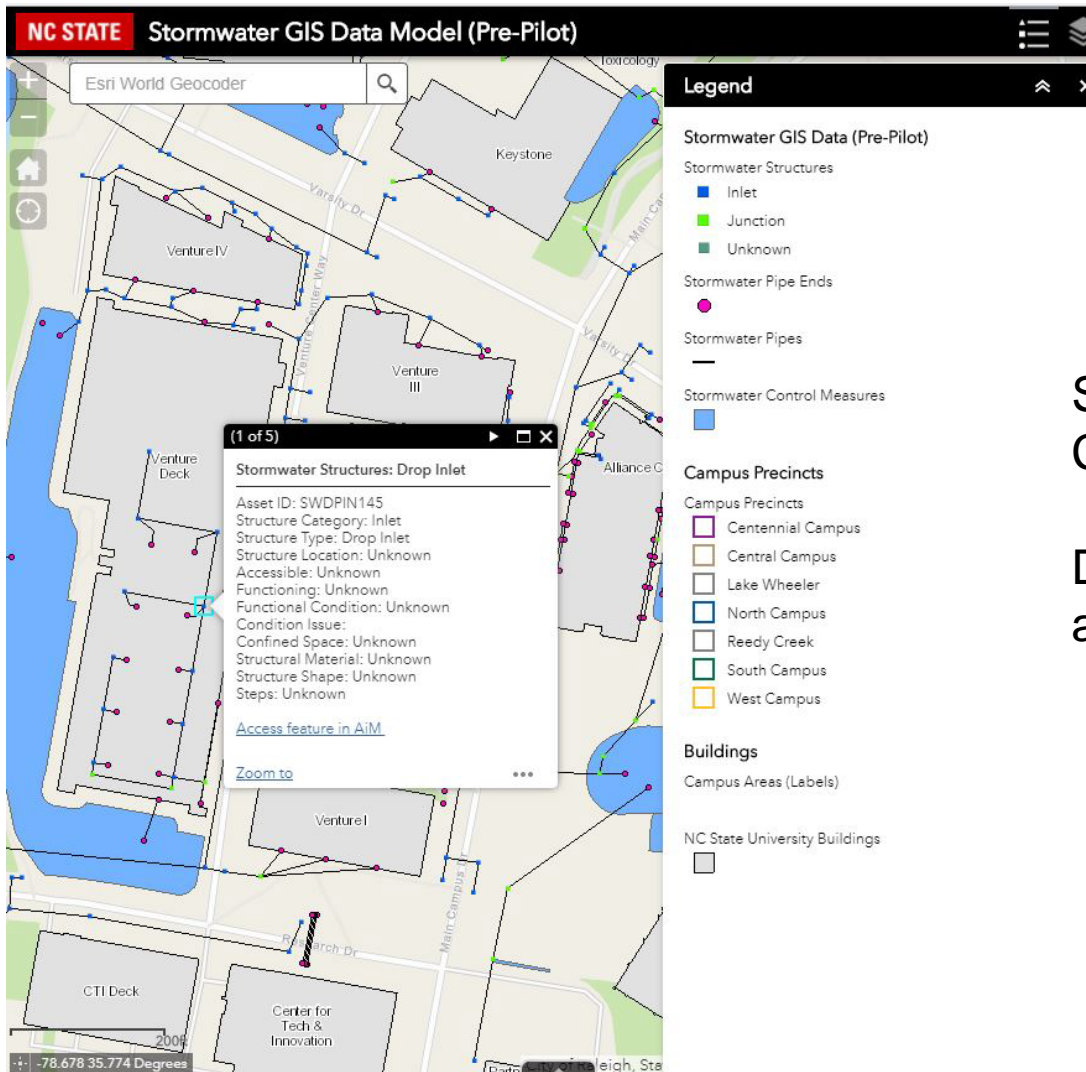
Emerged from Utilities Functional Requirements project

All 29 requirements common with other Utilities

Largest number of departments participating in one system

AiM integrated

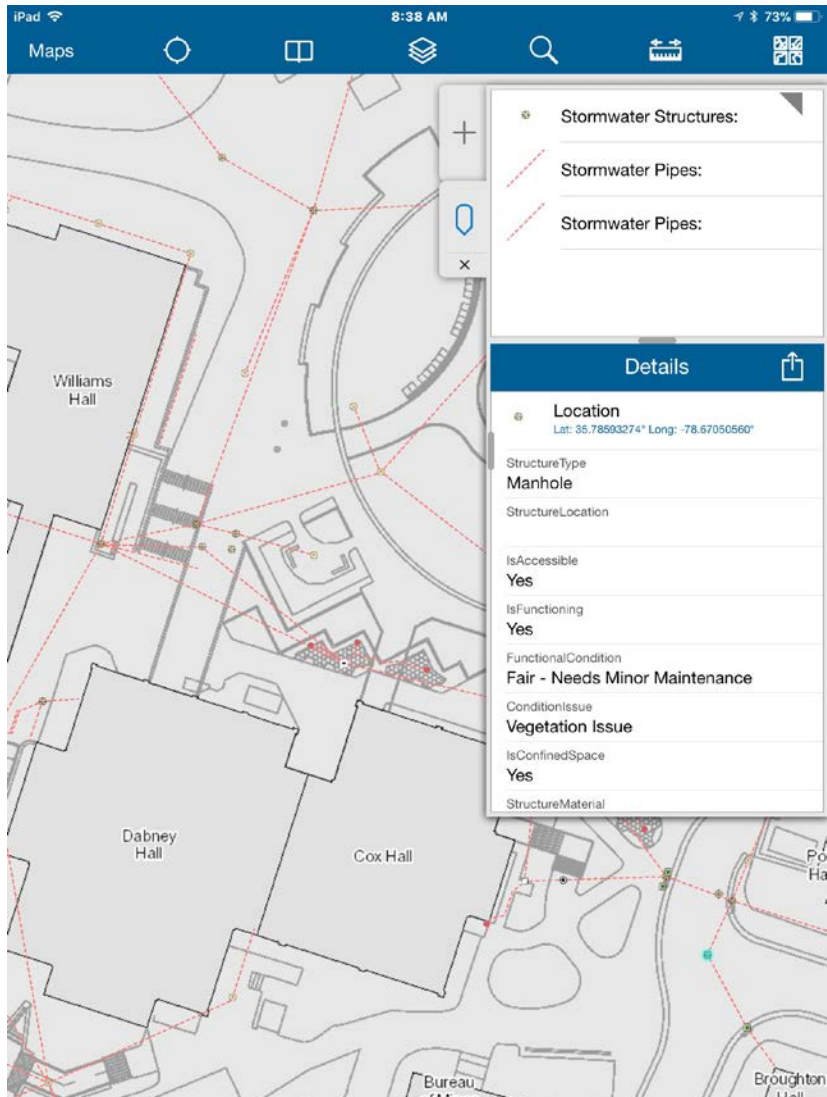
Utilities: Pilot Project - Stormwater Model



Selected Pre-pilot area on Centennial Campus

Developed Data Model Viewer application internally for review

Utilities: Pilot Project - Stormwater Model



Present: complete the rest of campus

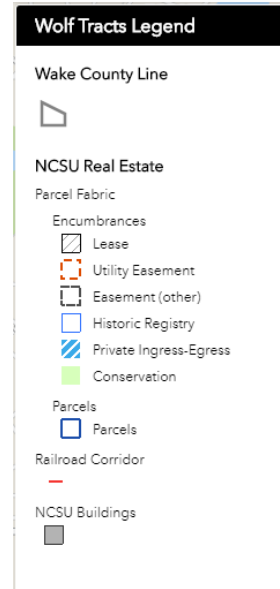
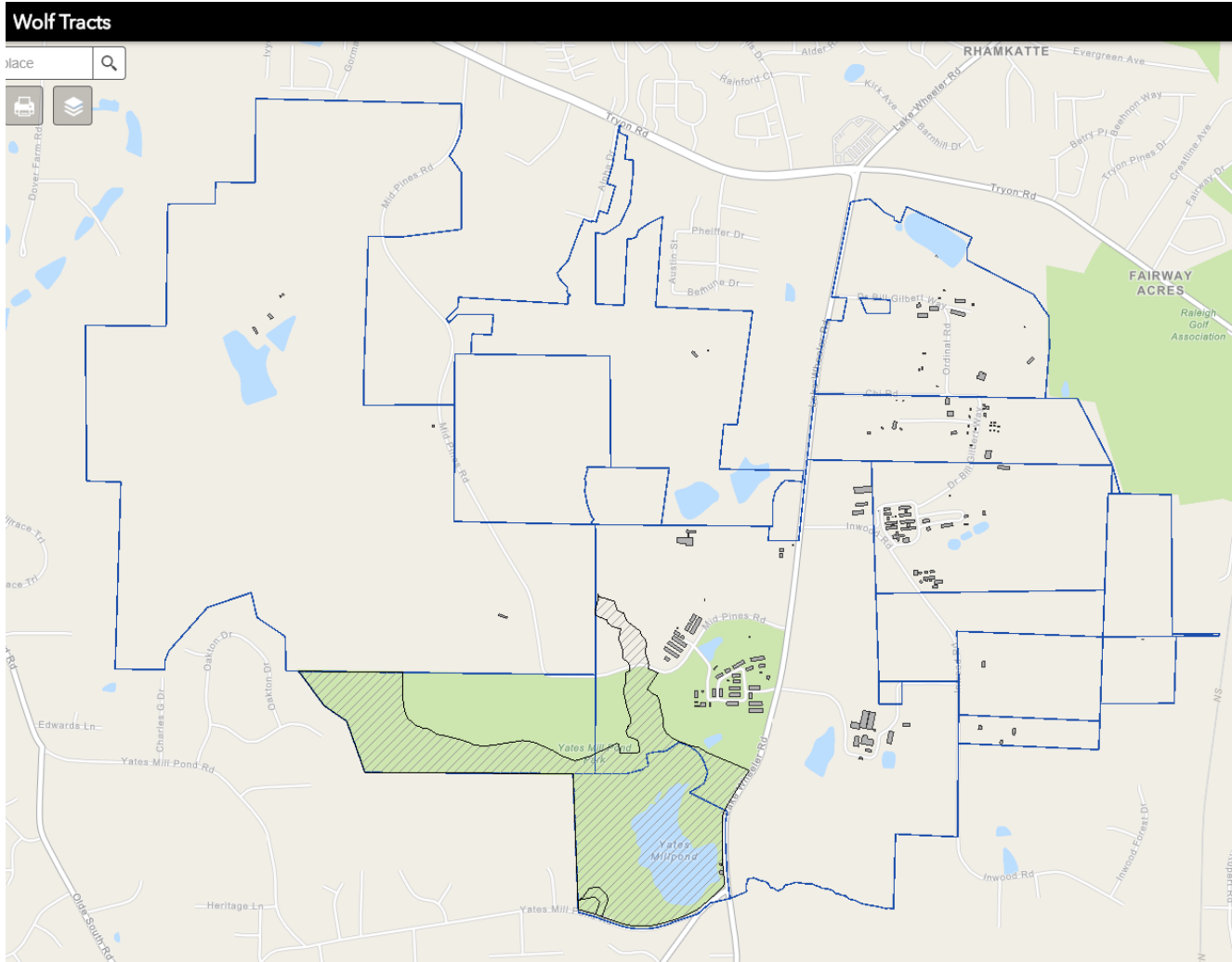
Future: post migration data validation and population via crowd sourcing

Action Item

Suggested order of next Utilities systems for GIS model development

- 1 Stormwater
- 2 Sanitary Sewer
- 3 Water Distribution
- 4 Chilled Water and Steam
- 5 Electrical
- 6 Telecommunications
- 7 Natural Gas

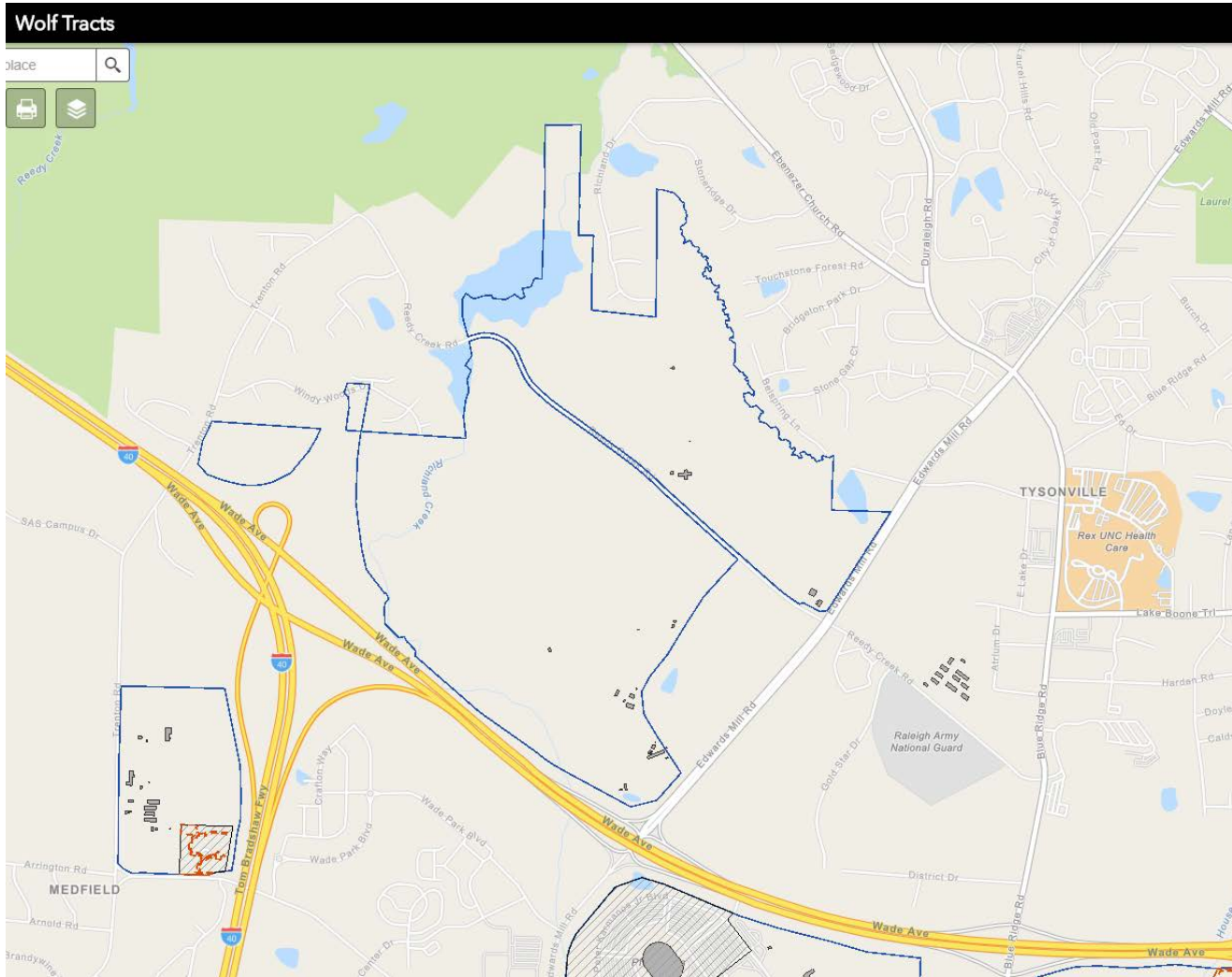
Parcel Data Progress



Lake Wheeler

1,988 acres ~ 17 parcels

Parcel Data Progress



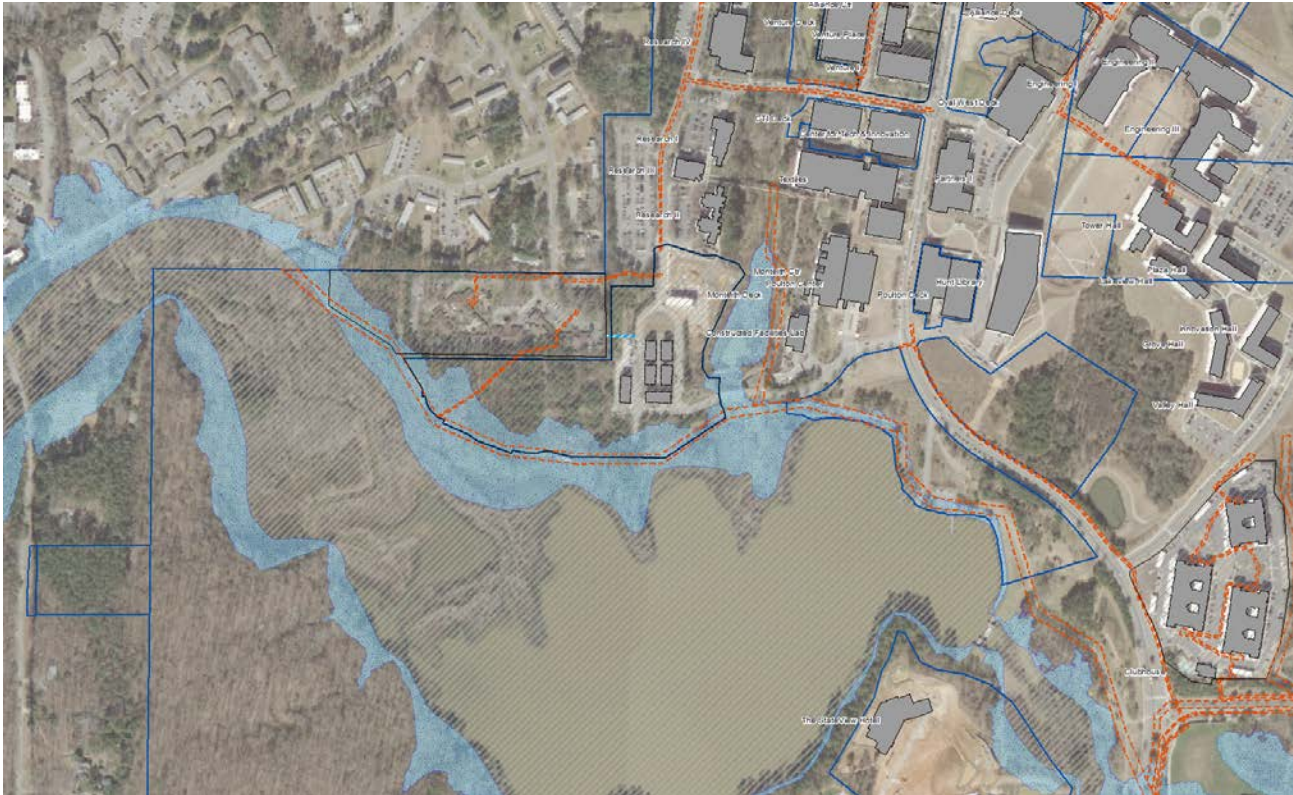
Wolf Tracts Legend

- Wake County Line
- NCSU Real Estate
 - Parcel Fabric
 - Encumbrances
 - Lease
 - Utility Easement
 - Easement (other)
 - Historic Registry
 - Private Ingress-Egress
 - Conservation
 - Parcels
 - Railroad Corridor
 - NCSU Buildings

Reedy Creek

702 acres ~ 4 parcels

Wolf Tracts New Features



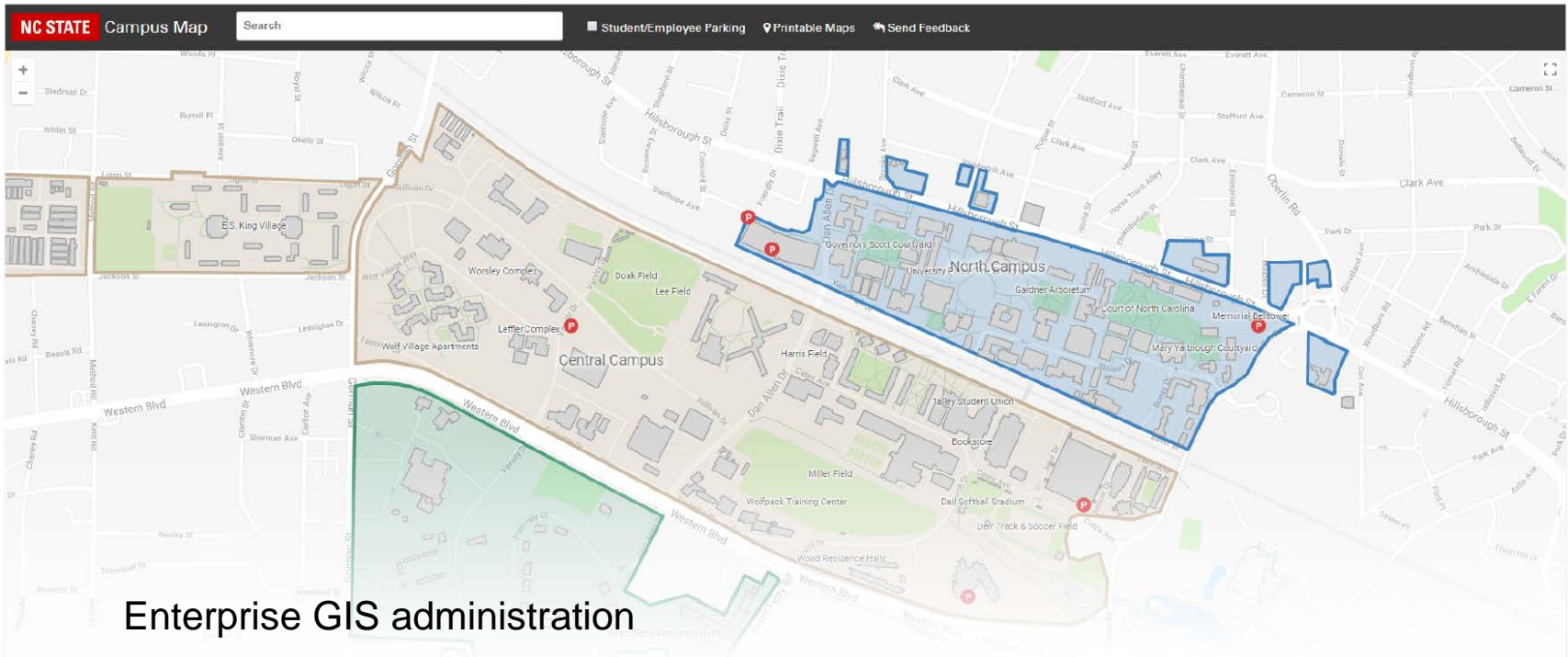
FEMA Floodplain

Most Current Ortho Photo ~ 2016

Historic Ortho Photos ~ Dating back to 1981

Online Campus Map

Migrate Online Campus Map from iTECs to OUA



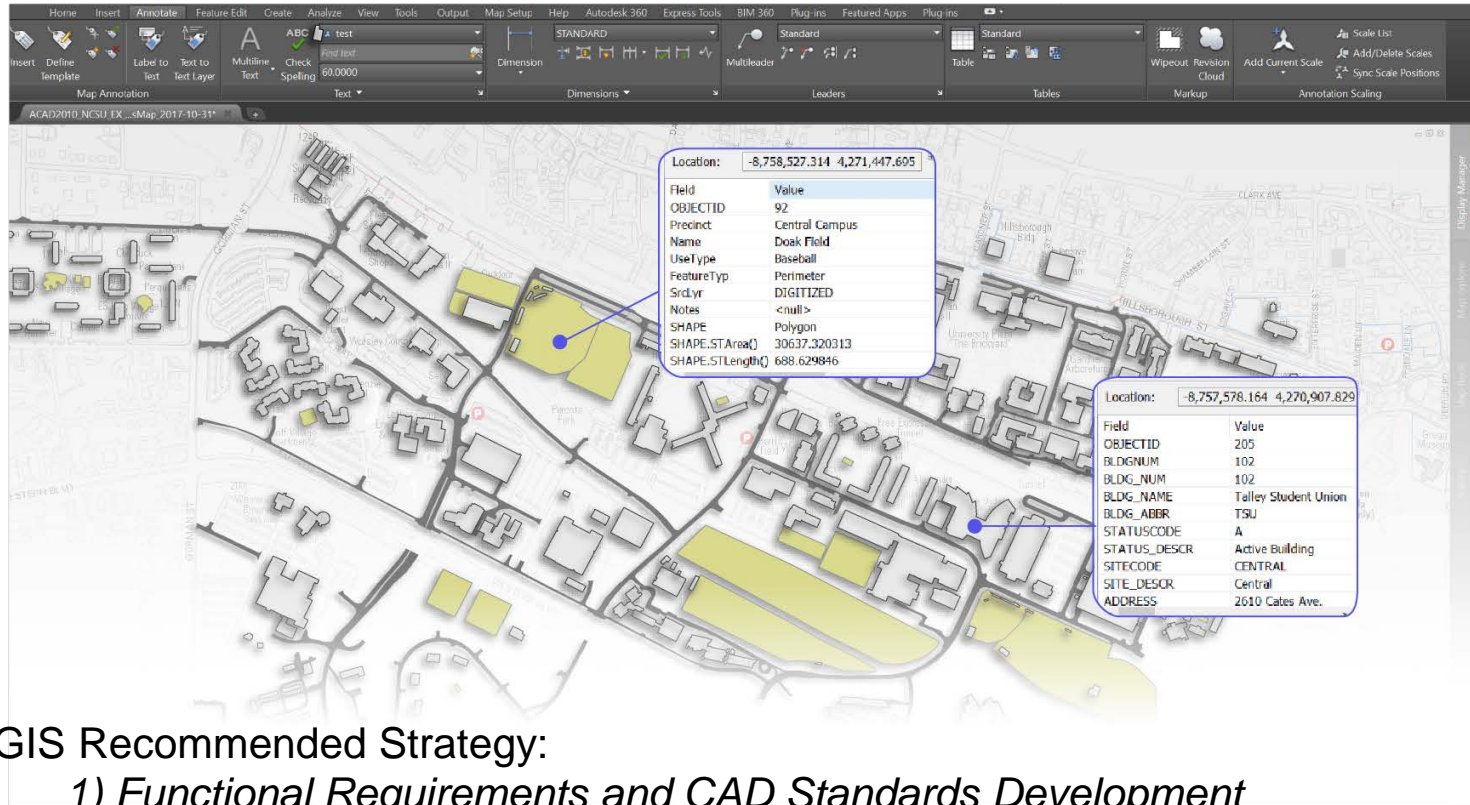
Enterprise GIS administration

Foundational framework

Primed for future data layers

Standardized Contiguous Basemap

CAD / GIS Integration



eGIS Recommended Strategy:

- 1) *Functional Requirements and CAD Standards Development*
- 2) *Implement CAD Standards Throughout Campus Base Map*
- 3) *Develop Interoperability Processes and Automation Between CAD and GIS*
- 4) *Enforce CAD Standards Through Plan Submission*

Other Business

Next Meeting: August 2018