



222 Cloister Ct.
Chapel Hill, NC 27514
919.401.8586



Design Consultant
300 West 22nd Street
Kansas City, MO 64108 USA
t +1 816 472 3360 f +1 816 472 2100

All reproduction & intellectual property rights reserved © 2017

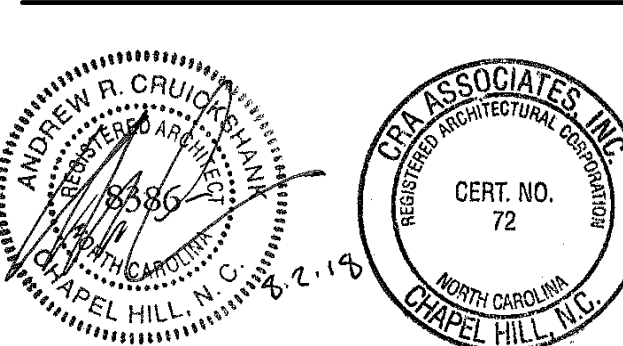


Project
**Carmichael Gymnasium
Addition and Renovation**
2611 Cates Ave, Raleigh NC 27695

Prepared For
NC State University
Raleigh, NC

Key Plan

Professional Seals



No. Description Date

Date: NOVEMBER 19, 2018
Phase: CONSTRUCTION DOCUMENTS
Project No: #201620011 Code: 41624 Item: 302 SCO ID: 16-15928-03A
Sheet Title
**COVER SHEET -
PACKAGE 2B
VOLUME 2**

Original drawing is 42 x 30. Do not scale contents of this drawing.
Sheet Number

Carmichael Gymnasium Addition and Renovation

NCSU Project #201620011 Code: 41624 Item: 302
SCO #16-15928-03A
NCSU Facility #101

PACKAGE 2B CONSTRUCTION DOCUMENT SUBMITTAL

November 19, 2017 Volume 2 - Architectural Interiors

Drawing Index

LIFE SAFETY	ARCHITECTURAL INTERIORS CONTINUED	ARCHITECTURAL INTERIORS CONTINUED
LS201 OVERALL BUILDING	A204 ENLARGED FLOOR PLANS & ELEVATIONS - LEVEL 2 LOBBY	A850 ENLARGED MILLWORK - LEVEL 1 CHECK DESK AND ADMIN RECEPTION DESK
LS101 EXIT STUDY LEVEL 1	A205 ENLARGED FLOOR PLANS & ELEVATIONS - LEVEL 3 PERFORMANCE STUDIO	A851 ENLARGED MILLWORK - LEVEL 2 CHECK DESK
LS102 EXIT STUDY LEVEL 2	A210 INTERIOR ELEVATIONS	A852 ENLARGED MILLWORK - LEVEL 1 CLASSROOM 1158 ISLAND
LS103 EXIT STUDY LEVEL 3	A300 BUILDING SECTIONS	A853 ENLARGED MILLWORK - LEVEL 2 LOBBY BENCH
LS104 EXIT STUDY LEVEL 4	A301 INTERIOR WALL SECTIONS	A854 ENLARGED MILLWORK ELEVATIONS
A001 GENERAL NOTES, LOCATION MAP	A302 INTERIOR WALL SECTIONS	A855 ENLARGED MILLWORK ELEVATIONS
A002 ADAAG BUILDING ACCESSIBILITY	A350 SECTION DETAILS	A857 MILLWORK DETAILS
A003 ADAAG RESTROOM AND ACCESSORY ACCESS DIAGRAMS	A400 ENLARGED STAIR PLANS	A858 MILLWORK DETAILS
A004 DEVICE MOUNTING DIAGRAMS	A401 ENLARGED STAIR PLANS	A859 MILLWORK DETAILS
A010 INTERIOR GWB PARTITION TYPES	A410 ARCHITECTURAL RAIL DETAILS	A860 MILLWORK DETAILS
A011 TYPICAL INTERIOR GWB PARTITION DETAILS	A411 ARCHITECTURAL RAIL & STAIR DETAILS	
A012 TYPICAL INTERIOR GWB PARTITION DETAILS	A450 PLAN DETAILS	
A013 TYPICAL COMPOSITE INTERIOR GWB PARTITION HEAD DETAILS	A451 PLAN DETAILS	
A014 TYPICAL COMPOSITE INTERIOR GWB PARTITION HEAD DETAILS	A500 INTERIOR DOOR SCHEDULE, GENERAL NOTES & LEGEND	
A015 TYPICAL NON-COMPOSITE INTERIOR GWB PARTITION HEAD DETAILS	A501 INTERIOR DOOR FRAME DETAILS	
A020 INTERIOR MASONRY PARTITION TYPES	A600 INTERIOR GLAZING AND COLUMN COVER SCHEDULE	
A021 TYPICAL INTERIOR MASONRY PARTITION DETAILS	A601 INTERIOR STOREFRONT DETAILS	
A022 TYPICAL INTERIOR MASONRY PARTITION DETAILS	A701 REFLECTED CEILING PLAN - OVERALL COMPOSITE - LEVEL 1	
A023 TYPICAL INTERIOR MASONRY PARTITION DETAILS	A701-A REFLECTED CEILING PLAN - LEVEL 1, SECTOR A	
A024 TYPICAL INTERIOR MASONRY PARTITION DETAILS	A701-B REFLECTED CEILING PLAN - LEVEL 1, SECTOR B	
A025 TYPICAL SHAFTWALL HEAD DETAILS	A702 REFLECTED CEILING PLAN - OVERALL COMPOSITE - LEVEL 2	
A026 TYPICAL PENETRATION DETAILS	A702-A REFLECTED CEILING PLAN - LEVEL 2, SECTOR A	
A101 FLOOR PLAN - OVERALL COMPOSITE - LEVEL 1	A702-B REFLECTED CEILING PLAN - LEVEL 2, SECTOR B	
A101-A FLOOR PLAN - LEVEL 1, SECTOR A	A703 REFLECTED CEILING PLAN - OVERALL COMPOSITE - LEVEL 3	
A101-B FLOOR PLAN - LEVEL 1, SECTOR B	A703-A REFLECTED CEILING PLAN - LEVEL 3, SECTOR A	
A102 FLOOR PLAN - OVERALL COMPOSITE - LEVEL 2	A703-B REFLECTED CEILING PLAN - LEVEL 3, SECTOR B	
A102-A FLOOR PLAN - LEVEL 2, SECTOR A	A704 REFLECTED CEILING PLAN - OVERALL COMPOSITE - LEVEL 4	
A102-B FLOOR PLAN - LEVEL 2, SECTOR B	A704-A REFLECTED CEILING PLAN - LEVEL 4, SECTOR A	
A103 FLOOR PLAN - OVERALL COMPOSITE - LEVEL 3	A704-B REFLECTED CEILING PLAN - LEVEL 4, SECTOR B	
A103-A FLOOR PLAN - LEVEL 3, SECTOR A	A710 CEILING DETAILS	
A103-B FLOOR PLAN - LEVEL 3, SECTOR B	A711 CEILING DETAILS	
A104 FLOOR PLAN - OVERALL COMPOSITE - LEVEL 4	A712 CEILING DETAILS	
A104-A FLOOR PLAN - LEVEL 4, SECTOR A	A713 CEILING DETAILS	
A104-B FLOOR PLAN - LEVEL 4, SECTOR B	A800 FINISH LEGEND & SCHEDULE	
A200 ENLARGED FLOOR PLANS & ELEVATIONS - LEVEL 1 & LEVEL 2 RESTROOMS	A801 FINISH PLAN - LEVEL 1	
A201 ENLARGED FLOOR PLANS & ELEVATIONS - LEVEL 3 & 4 RESTROOMS	A802 FINISH PLAN - LEVEL 2	
A202 ENLARGED FLOOR PLANS & ELEVATIONS - LEVEL 1 CLASSROOM 1158 & CLASSROOM 1159	A803 FINISH PLAN - LEVEL 3	
A203 ENLARGED FLOOR PLANS & ELEVATIONS - LEVEL 2 CLASSROOM 2150 & CLASSROOM 2158	A804 FINISH PLAN - LEVEL 4	
	A810 FLOORING TRANSITIONS	



architecture and civil engineering
cra associates inc.

architects | engineers | planners
222 Cloister Court, Chapel Hill NC, 27514
919.401.8586

recreation design consultant
HOK
300 West 22nd Street, Kansas City, MO 64108
816-472-3360

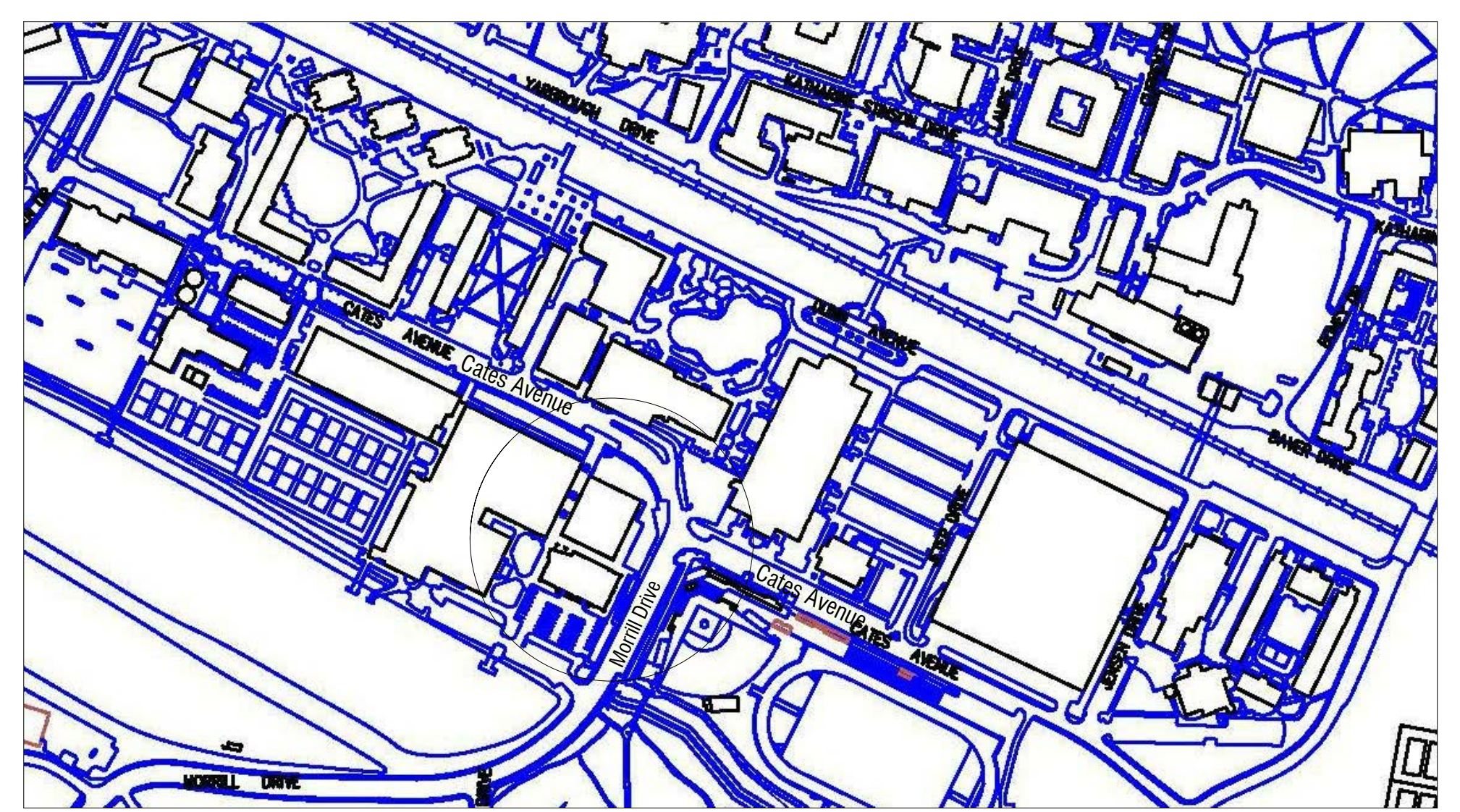
structural engineering
LHC Engineers,
1331 Sunday Drive, Suite 121, Raleigh, NC 27607
919-832-5587

mechanical, electrical, plumbing and fire alarm engineering
Bass, Nixon and Kennedy,
6310 Chapel Hill Road, Suite 250, Raleigh, NC 27607
919-851-4422

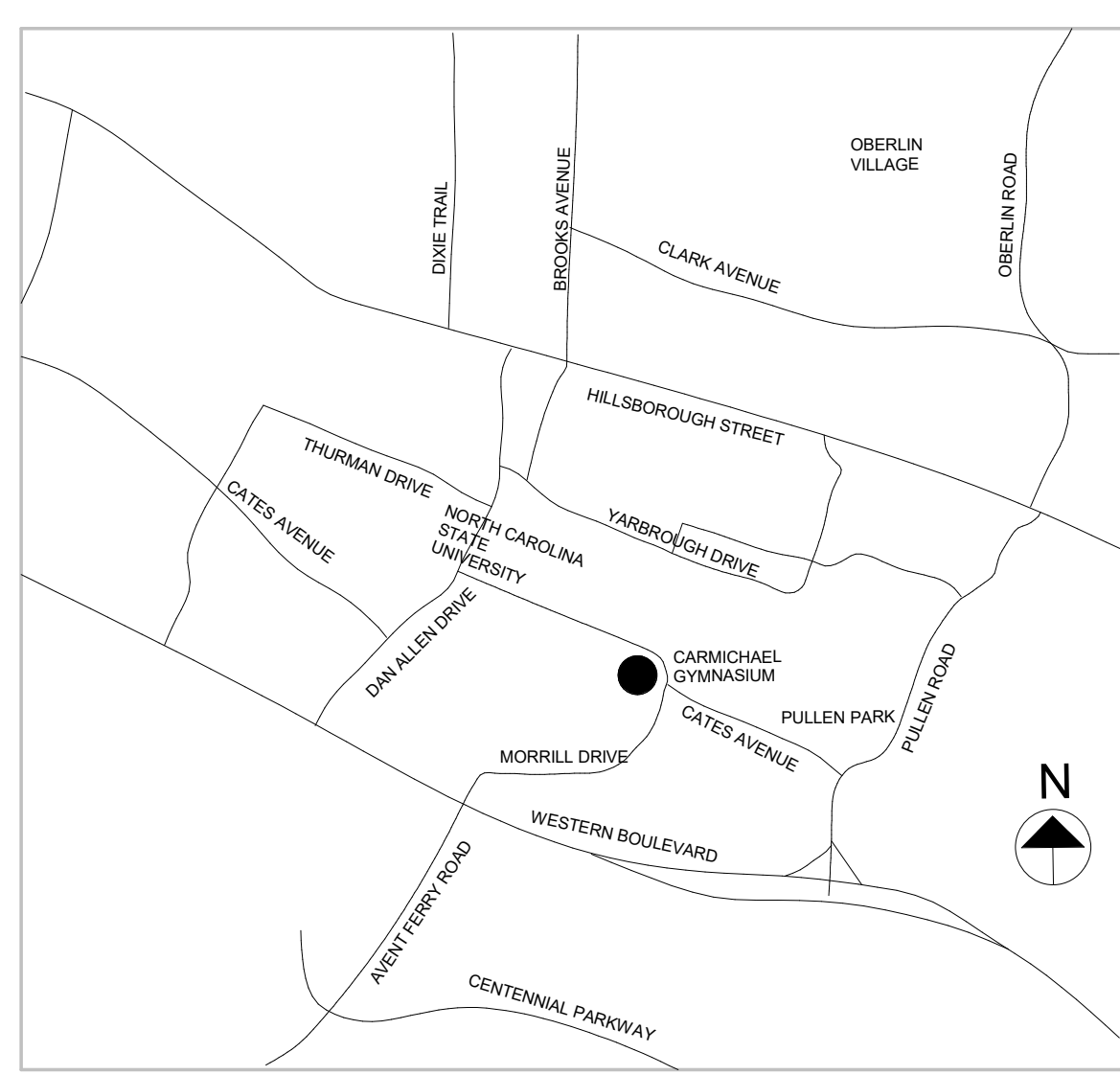
landscape design
ColeJenest &
119 E Hargett Street, Suite 300, Raleigh, NC 27601
919-719-1800

fire protection engineering
Jensen Hughes
5520 Dillard Dr., Suite 130, Cary NC 27518
919-424-3858

code consultant
FP&C
3770 Broadway Blvd, Kansas City, MO 64111
816-931-3377



PROJECT SITE



LOCATION MAP



222 Cloister Ct.
Chapel Hill, NC 27514
919.401.8586



Design Consultant
300 West 22nd Street
Kansas City, MO 64108 USA
t+1 816 472 3360 f+1 816 472 2100

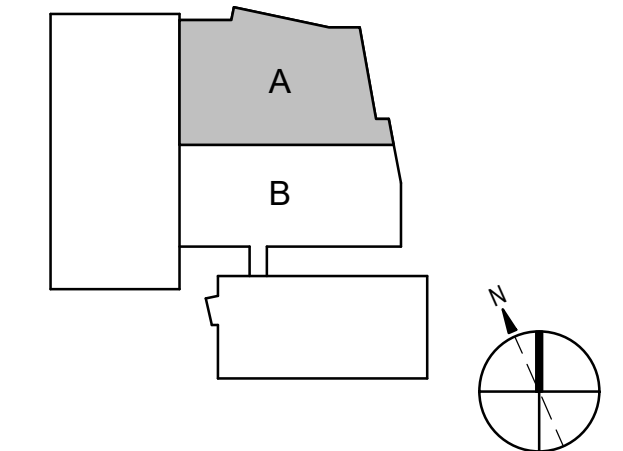
All reproduction & intellectual property rights reserved © 2018
In Association with



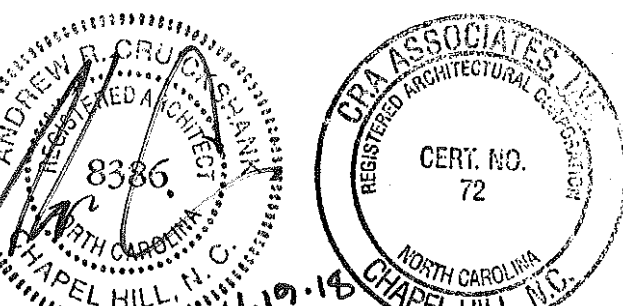
Project
**Carmichael Gymnasium
Addition and Renovation**
2611 Cates Ave, Raleigh NC 27695

Prepared For
NC State University
Raleigh, NC

Key Plan



Professional Seals



Review Only – NOT FOR CONSTRUCTION

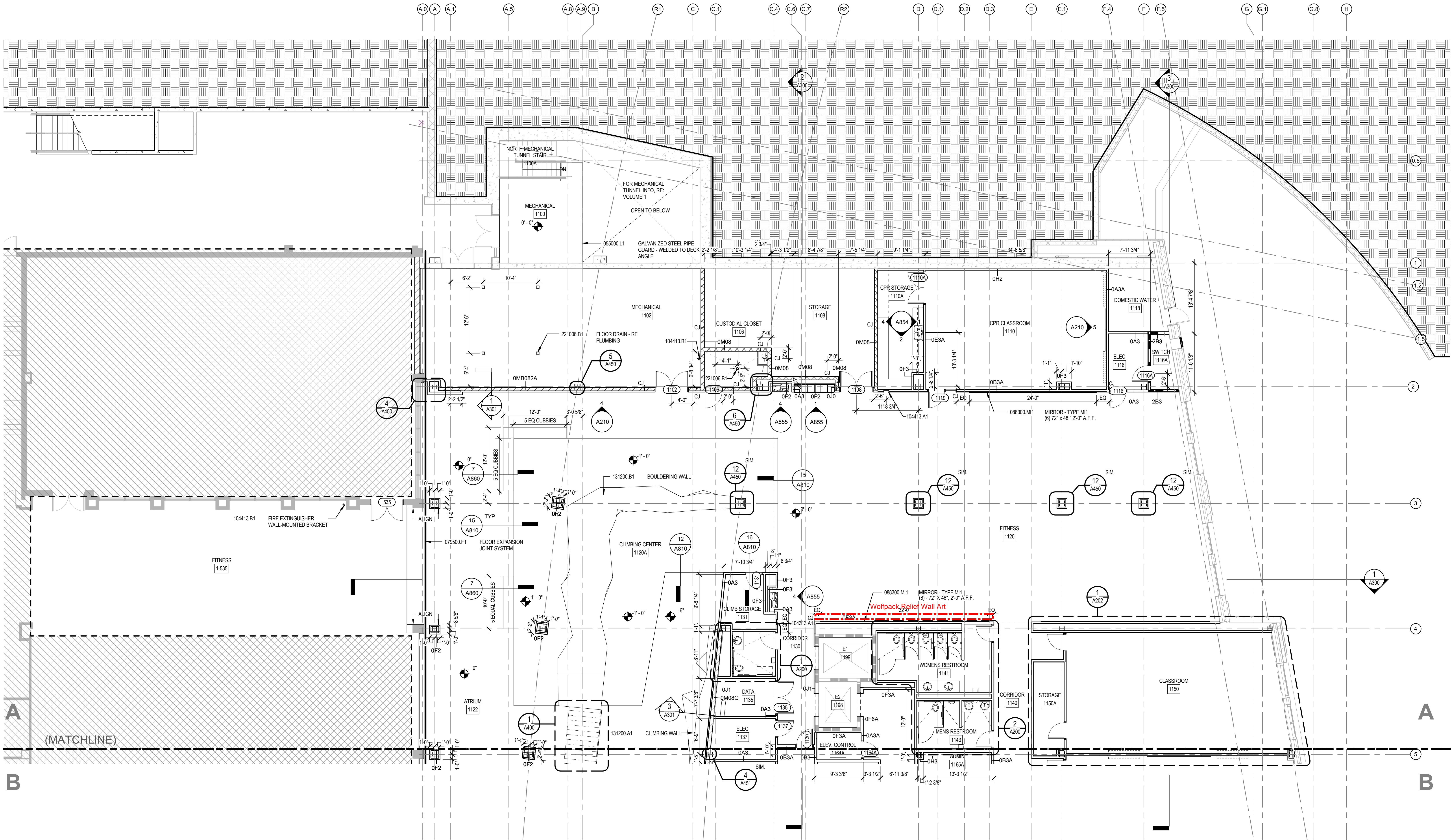
No.	Description	Date

Date: **NOVEMBER 19, 2018**
Phase: **CONSTRUCTION DOCUMENTS**
Project: **#201620011 Code: 41624**
Item: **302 SCO ID: 16-15928-03A**
Package No. **2B**
Volume No. **2**

Sheet Title
FLOOR PLAN - LEVEL 1, SECTOR A

Original drawing is 42 x 30. Do not scale contents of this drawing.
Sheet Number

A101-A



1 LEVEL 1, SECTOR A

1/8" = 1'-0"

- TYPICAL PLAN NOTES**
- CONTRACTOR SHALL PREPARE SLAB COORDINATION DRAWINGS FOR EACH FLOOR AND ROOF SLAB. AT A MINIMUM, DRAWINGS SHALL INCLUDE THE FOLLOWING INFORMATION:
 - STRUCTURAL TRIMMING SUPPORTING SLAB SHOWING ACTUAL FLANGE OR BEAM WIDTH
 - EDGE OF SLAB LIMITS
 - EDGE OF SLAB REINFORCEMENTS
 - CURTAIN WALL BEARING AND CONNECTION LOCATIONS
 - FLOOR OPENING DIMENSIONS
 - FLOOR SLOPES AND PITCHES
 - FLANGES REQUIREMENTS FOR ACTUAL FINISH FLOOR ASSEMBLY OR MATERIAL
 - ALL DRAINS, SLEEVES OR OTHER OPENINGS REQUIRED INCLUDING OPENINGS INTENDED TO BE CORE DRIILLED AFTER THE STRUCTURAL SLAB IS INSTALLED
 - ARCHITECTURAL SCORE IS DIVIDED INTO VOLUME 1 (EXTERIOR, CORE & SHELL - "AF" SERIES) AND VOLUME 2 (INTERIOR - "AI" SERIES). SCOPE SHOWN HALFTONED IN VOLUME 1 SCOPE AND PROVIDE FOR REFERENCE ONLY.
 - REFER TO THE REFERENCE, SECTOR PLANS AND LIFE SAFETY DRAWINGS FOR LOCATIONS OF FIRE-RESISTANCE RATED PARTITIONS AND NON-FIRE-RESISTANCE RATED SMOKE PARTITIONS.
 - REFER TO A210 AND ADD SERIES FOR TYPICAL INTERIOR PARTITION TYPES AND DETAILS INCLUDING REINFORCEMENT AND/OR BLOCKING REQUIREMENTS FOR WALL MOUNTED ITEMS
 - REFER TO ADD SERIES FOR TYPICAL MOUNTING LOCATIONS AND HEIGHTS FOR TOILET ACCESSORIES, EQUIPMENT, WALL SPECIALTY DESIGNATIONS, VISUAL DISPLAY BOARDS, TYPICAL TOILET FLOOR ELEVATIONS, AND STALL TYPES, ETC.

- REFER TO ADD SERIES FOR FINISH PLANS AND FLOOR PATTERNS. REFER TO ADD FOR FINISH LEGEND.
- ALIGN PARTITIONS WITH COLUMN OR MULLION CENTERLINE, UNLESS OTHERWISE NOTED. DIMENSIONS ARE FROM FACE OF FINISH TO FACE OF FINISH, I.E. FACE OF GYPSUM BOARD OR MASONRY OR FROM FACE OF EXISTING CONDITION OR FROM COLUMN CENTERLINE, UNLESS OTHERWISE NOTED. DIMENSIONS NOTED AS "CLEAR" SHALL BE FROM FINISH FACE TO FINISH FACE, I.E. FACE OF CERAMIC TILE TO FACE OF CERAMIC TILE. VERIFY ALL EXISTING DIMENSIONS IN THE FIELD.
- ALL INTERIOR FLOOR SLOPES TO DRAIN TO BE 1/8" PER 1'-0" (2%), UNLESS OTHERWISE NOTED.
- PROVIDE FIRE TREATED WOOD BLOCKING OR STEEL FLAT STRIP PER SPECIFICATIONS AND BLOCKING WALL BUMPERS, AND ALL OTHER WALL MOUNTED EQUIPMENT OR DEVICES.
- ALL EXPOSED STRUCTURAL STEEL MEMBERS, INCLUDING BUT NOT LIMITED TO, FLOOR AND/OR ROOF BECKING, COLUMNS, BEAMS AND JOISTS (INCLUDING FIREPROTECTED MEMBERS) AND MEP SYSTEMS ARE TO BE PAINTED. PER FINISH SCHEDULE, INCLUDING ALL AREAS ABOVE CEILING OR UNDER CEILING.
- ALL PRIMARY STRUCTURE TO BE FIREPROOFED IN ACCORDANCE WITH TYPE 1B CONSTRUCTION USING SPRAY APPLIED FIREPROOFING UNLESS OTHERWISE NOTED. TRACK HANGERS AND OTHERWISE DESIGNATED EXPOSED STRUCTURAL MEMBERS TO RECEIVE INTUMESCENT FIREPROOFING. FIREPROOFING SCOPE NOT SHOWN IN ALL DETAILS OR VIEWS. REFER TO LIFE SAFETY DRAWINGS FOR FURTHER INFORMATION.
- ALL RAILING, HANDRAILS AND KNEE WALLS ARE DELEGATED DESIGN PER SPECIFICATION REQUIREMENTS.
- ALL MEP ITEMS ARE SHOWN FOR REFERENCE. REFER TO SPECIFIC TRADE FOR MORE INFORMATION.

- 055000.L1 GALVANIZED STEEL PIPE GUARD - WELDED TO DECK ANGLE
- 079500.F1 FLOOR EXPANSION JOINT SYSTEM
- 088300.M1 MIRROR - TYPE M1
- 104013.A1 DESHOWER CABINET
- 104413.A1 FIRE EXTINGUISHER CABINET
- 131200.A1 CLIMBING WALL
- 131200.B1 BOULDERING WALL
- 221006.B1 FLOOR DRAIN - RE PLUMBING

- FLOOR EXPANSION JOINT SYSTEM
- MIRROR - TYPE M1
- DESHOWER CABINET
- FIRE EXTINGUISHER CABINET
- CLIMBING WALL
- BOULDERING WALL
- FLOOR DRAIN - RE PLUMBING

LEGEND: SCOPES OF WORK

- EXISTING BUILDING TO REMAIN
- NO WORK, PROTECT AS REQUIRED.
- FIRE ALARM AND SPRINKLER WORK ONLY, PROTECT AS REQUIRED.

LEGEND: WALL RATINGS

- 1 HR RATED PARTITION
- 2 HR RATED PARTITION

2018-11-19 3:33:26 PM



222 Cloister Ct.
Chapel Hill, NC 27514
919.401.8586



Design Consultant
300 West 22nd Street
Kansas City, MO 64108 USA
t+1 816 472 3360 f+1 816 472 2100

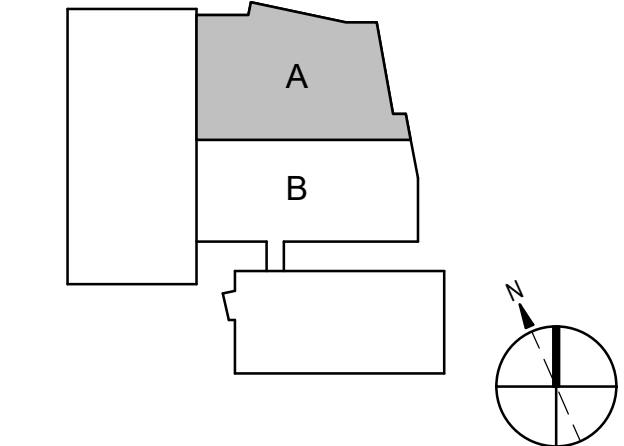
All reproduction & intellectual property rights reserved © 2018
In Association with



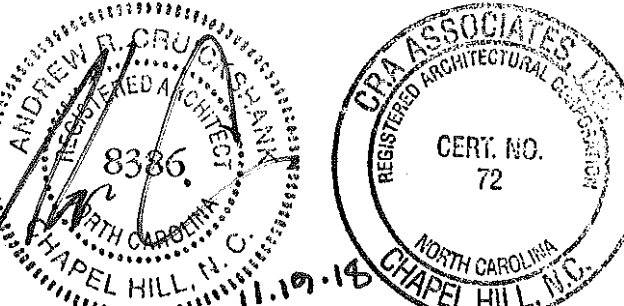
Project
Carmichael Gymnasium
Addition and Renovation
2611 Cates Ave, Raleigh NC 27695

Prepared For
NC State University
Raleigh, NC

Key Plan



Professional Seals



Review Only - NOT FOR CONSTRUCTION

No. Description Date

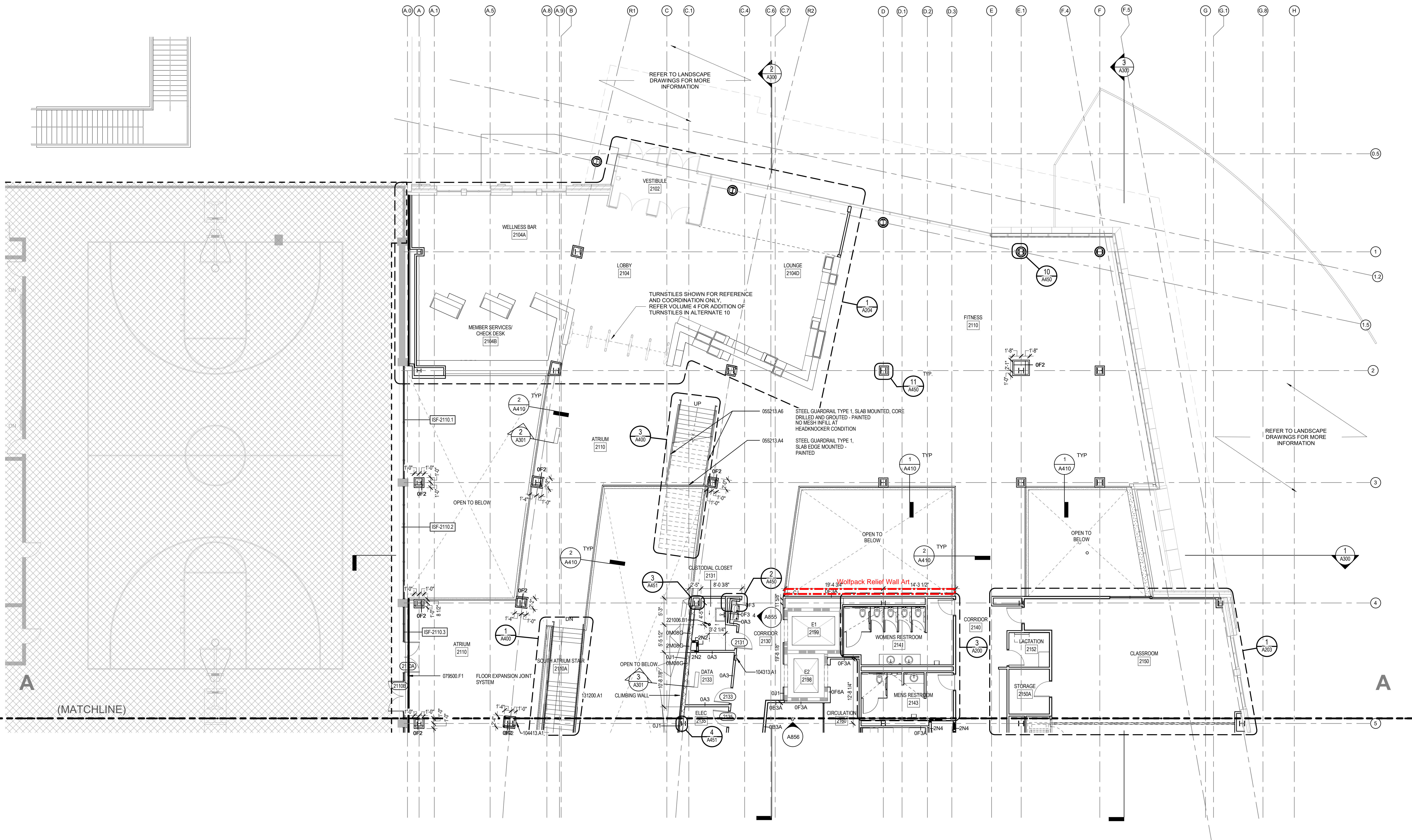
No.	Description	Date

Date: NOVEMBER 19, 2018
Phase: CONSTRUCTION DOCUMENTS
Project No: #201620011 Code: 41624
Item: 302 SCO ID: 16-15928-03A
Package No. 2B
Volume No. 2

Sheet Title
FLOOR PLAN - LEVEL
2, SECTOR A

Original drawing is 42 x 30. Do not scale contents of this drawing.
Sheet Number

A102-A



1 LEVEL 2, SECTOR A
1/8" = 1'-0"

- TYPICAL PLAN NOTES**
- CONTRACTOR SHALL PREPARE SLAB COORDINATION DRAWINGS FOR EACH FLOOR AND ROOF SLAB. AT A MINIMUM, DRAWINGS SHALL INCLUDE THE FOLLOWING INFORMATION:
 - STRUCTURAL TRACING SUPPORTING SLAB SHOWING ACTUAL FLANGE OR BEAM WIDTH
 - EDGE OF SLAB LIMITS
 - EDGE OF SLAB REINFORCEMENTS
 - CURTAIN WALL BEARING AND CONNECTION LOCATIONS
 - FLOOR OPENINGS AND SHIFTS
 - FLOOR SLOPES AND PITCHES
 - FINISH REQUIREMENTS FOR ACTUAL FINISH FLOOR ASSEMBLY OR MATERIAL
 - ALL DRAINS, SLEEVES OR OTHER OPENINGS REQUIRED INCLUDING OPENINGS INTENDED TO BE CORE DRILLED AFTER THE STRUCTURAL SLAB IS INSTALLED
 - ARCHITECTURAL SCORE IS DIVIDED INTO VOLUME 1 (EXTERIOR, CORE & SHELL - "A" SERIES) AND VOLUME 2 (INTERIOR - "A" SERIES); SCOPE SHOWN/HIGHLIGHTED IN VOLUME 2 IS INTENDED TO REPRESENT VOLUME 1 SCOPE AND PROVIDED FOR REFERENCE ONLY
 - REFER TO THE REFERENCE, SECTION PLANS AND LIFE SAFETY DRAWINGS FOR LOCATIONS OF FIRE-RESISTANCE RATED PARTITIONS AND NON-FIRE-RESISTANCE RATED SMOKE PARTITIONS
 - REFER TO A410 AND A450 SERIES FOR TYPICAL INTERIOR PARTITION TYPES AND DETAILS INCLUDING REINFORCEMENT AND/OR BLOCKING REQUIREMENTS FOR WALL MOUNTED ITEMS
 - REFER TO A450 SERIES FOR TYPICAL MOUNTING LOCATIONS AND HEIGHTS FOR TOILET ACCESSORIES, EQUIPMENT, WALL SPECIALTY DESIGNATIONS, VISUAL DISPLAY BOARDS, TYPICAL TOILET ROOM ELEVATIONS, AND STALL TYPES, ETC
 - REFER TO A450 SERIES FOR FINISH PLANS AND FLOOR PATTERNS. REFER TO A450 FOR FINISH LEGEND
 - ALONG PARTITIONS WITH COLUMN OR WALL CENTERLINE, UNLESS OTHERWISE NOTED, DIMENSIONS ARE FROM FACE OF FINISH TO FACE OF FINISH, I.E. FACE OF GYP/SURF BOARD OR MASONRY OR FROM FACE OF EXISTING CONDITION OR FROM COLUMN CENTERLINE, UNLESS OTHERWISE NOTED. DIMENSIONS NOTED AS 'CLEAR' SHALL BE FROM FINISH FACE TO FINISH FACE (I.E. FACE OF CERAMIC TILE TO FACE OF CERAMIC TILE). VERIFY ALL EXISTING DIMENSIONS IN THE FIELD
 - ALL INTERIOR FLOOR SLOPES TO DRAIN TO BE 1/8" PER 1'-0" UNLESS OTHERWISE NOTED
 - PROVIDE FIRE TREATED WOOD BLOCKING OR STEEL FLAT STRAP PER SPECIFICATIONS AND BACKING WALL BUMPERS, AND ALL OTHER WALL MOUNTED EQUIPMENT OR DEVICES
 - ALL EXPOSED STRUCTURAL STEEL MEMBERS, INCLUDING BUT NOT LIMITED TO FLOOR AND/OR ROOF BEAMS, COLUMNS, BEAMS AND JOISTS (INCLUDING FIRE-PROTECTED MEMBERS) AND MEP SYSTEMS ARE TO BE PAINTED PER FINISH SPECIFICATIONS INCLUDING ALL AREAS ABOVE TROOPING OR CLIMBING CRAWLS
 - ALL PRIMARY STRUCTURE TO BE FIREPROOFED IN ACCORDANCE WITH TYPE I-B CONSTRUCTION USING SPRAY APPLIED FIREPROOFING UNLESS OTHERWISE NOTED. TRACK HANGERS AND OTHERS BE DESIGNATED, EXPOSED STRUCTURAL MEMBERS TO RECEIVE INTUMESCENT FIREPROOFING. FIREPROOFING SCOPE NOT SHOWN IN ALL DETAILS OR VIEWS. REFER TO LIFE SAFETY DRAWINGS FOR FURTHER INFORMATION
 - ALL RAILINGS, HANDRAILS AND KNEE WALLS, ARE DELEGATED DESIGN PER SPECIFICATION REQUIREMENTS
 - ALL MEP ITEMS ARE SHOWN FOR REFERENCE. REFER TO SPECIFIC TRADE FOR MORE INFORMATION

- 055213.A4
 - 079500.F1
 - 104313.A1
 - 104413.A1
 - 131200.A1
 - 221006.B1
- STEEL GUARDRAIL TYPE 1, SLAB EDGE MOUNTED - PAINTED
STEEL GUARDRAIL TYPE 1, SLAB MOUNTED, CORE DRILLED AND GROUTED - PAINTED
FLOOR EXPANSION JOINT SYSTEM
DEFIBRILLATOR CABINET
FIRE EXTINGUISHER CABINET
CLIMBING WALL
FLOOR DRAIN - RE PLUMBING

LEGEND: SCOPES OF WORK

- EXISTING BUILDING TO REMAIN
- NO WORK, PROTECT AS REQUIRED
- FIRE ALARM AND SPRINKLER WORK ONLY, PROTECT AS REQUIRED

LEGEND: WALL RATINGS

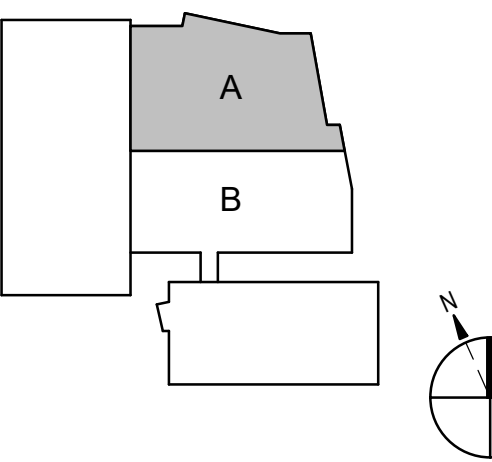
- 1 HR RATED PARTITION
- 2 HR RATED PARTITION



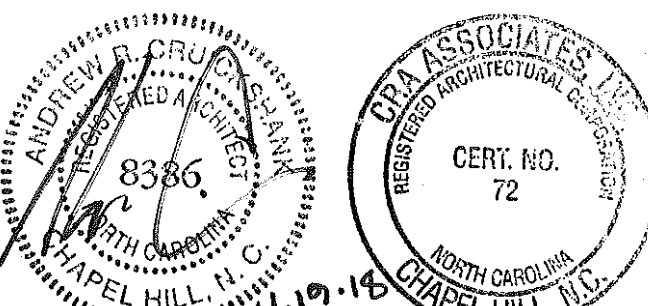
Project
Carmichael Gymnasium
Addition and Renovation
2611 Cates Ave, Raleigh NC 27695

Prepared For
NC State University
Raleigh, NC

Key Plan



Professional Seals



Review Only - NOT FOR CONSTRUCTION

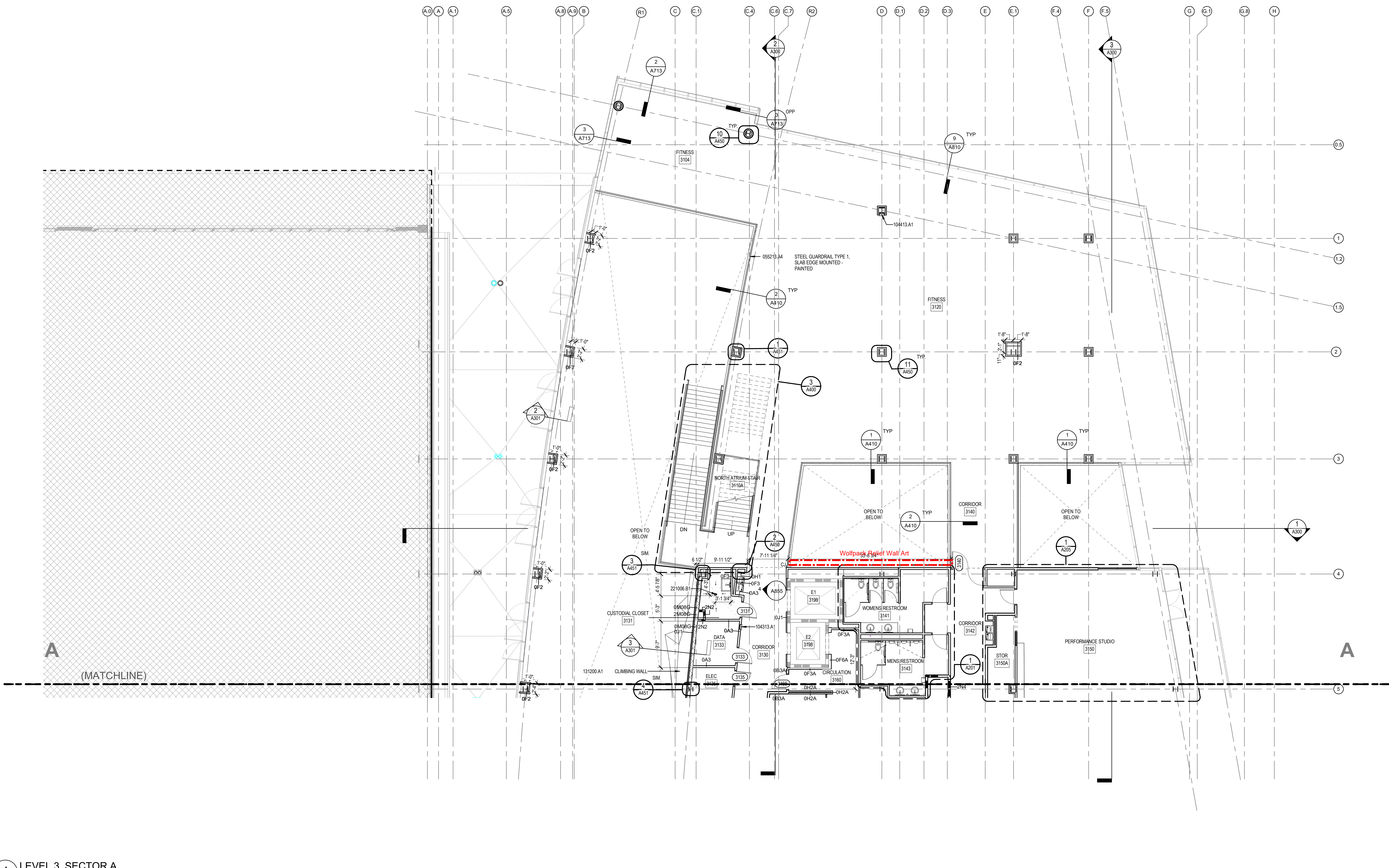
No.	Description	Date
-----	-------------	------

Date: NOVEMBER 19, 2018
Phase: CONSTRUCTION DOCUMENTS
Project: #201620011 Code: 41624
No.: Item: 302 SCO ID: 16-15928-03A
Package No. 2B
Volume No. 2

Sheet Title
FLOOR PLAN - LEVEL
3, SECTOR A

Original drawing is 42 x 30. Do not scale contents of this drawing.
Sheet Number

A103-A



1 LEVEL 3, SECTOR A
1/8" = 1'-0"

TYPICAL PLAN NOTES:

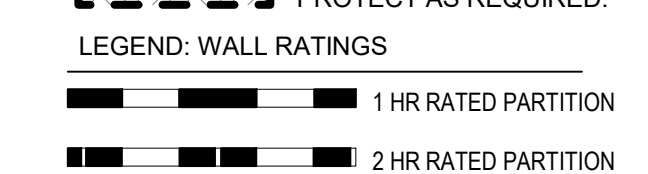
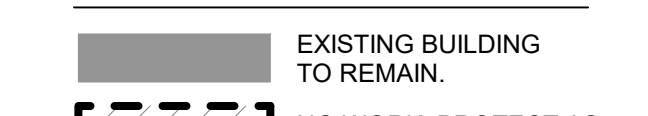
- CONTRACTOR SHALL PREPARE SLAB COORDINATION DRAWINGS FOR EACH FLOOR AND ROOF SLAB. AT A MINIMUM, DRAWINGS SHALL INCLUDE THE FOLLOWING INFORMATION:
 - STRUCTURAL TRIMMING SUPPORTING SLAB SHOWING ACTUAL FLANGE OR BEAM WIDTH
 - EDGE OF SLAB LIMITS
 - EDGE OF SLAB REINFORCEMENTS
 - CURTAIN WALL BEARING AND CONNECTION LOCATIONS
 - FLOOR OPENINGS AND SHIFTS
 - FLOOR SLOPES AND PITCHES
 - FINISH REQUIREMENTS FOR ACTUAL FINISH FLOOR ASSEMBLY OR MATERIAL
 - ALL DRAINS, SLEEVES OR OTHER OPENINGS REQUIRED INCLUDING OPENINGS INTENDED TO BE CORE DRILLED AFTER THE STRUCTURAL SLAB IS INSTALLED
- ARCHITECTURAL SCORE IS DIVIDED INTO VOLUME 1 (EXTERIOR, CORE & SHELL - "AF" SERIES) AND VOLUME 2 (INTERIOR - "A" SERIES). SCOPE SHOWN/HIGHLIGHTED IN VOLUME 1 SCOPE AND PROVIDED FOR REFERENCE ONLY.
- REFER TO THE REFERENCE, SECTION PLANS AND LIFE SAFETY DRAWINGS FOR LOCATIONS OF FIRE-RESISTANCE RATED PARTITIONS AND NON-FIRE-RESISTANCE RATED SMOKE PARTITIONS.
- REFER TO A410 AND A400 SERIES FOR TYPICAL INTERIOR PARTITION TYPES AND DETAILS INCLUDING REINFORCEMENT AND/OR BLOCKING REQUIREMENTS FOR WALL MOUNTED ITEMS.
- REFER TO A400 SERIES FOR TYPICAL MOUNTING LOCATIONS AND HEIGHTS FOR TOILET ACCESSORIES, EQUIPMENT, WALL SPECIALTY DESIGNATIONS, VISUAL DISPLAY BOARDS, TYPICAL TOILET ROOM ELEVATIONS, AND STALL TYPES, ETC.

- REFER TO A400 SERIES FOR FINISH PLANS AND FLOOR PATTERNS. REFER TO A400 FOR FINISH LEGEND.
- ALCOY PARTITIONS WITH COLUMN OR MULLION CENTERLINE, UNLESS OTHERWISE NOTED. DIMENSIONS ARE FROM FACE OF FINISH I.E. FACE OF GYP/SUM BOARD OR MASONRY OR FROM FACE OF EXISTING CONDITION OR FROM COLUMN CENTERLINE, UNLESS OTHERWISE NOTED. DIMENSIONS NOTED AS 'CLEAR' SHALL BE FROM FINISH FACE TO FINISH FACE (I.E. FACE OF CERAMIC TILE TO FACE OF CERAMIC TILE). VERIFY ALL EXISTING DIMENSIONS IN THE FIELD.
- ALL INTERIOR FLOOR SLOPES TO DRAIN TO BE 1/8" PER 1'-0" (2%), UNLESS OTHERWISE NOTED
- PROVIDE FIRE TREATED WOOD BLOCKING OR STEEL FLAT STRAP PER SPECIFICATIONS AND BACKING WALL BUMPERS, AND ALL OTHER WALL MOUNTED EQUIPMENT OR DEVICES.
- ALL EXPOSED STRUCTURAL STEEL MEMBERS, INCLUDING BUT NOT LIMITED TO, FLOOR AND/OR ROOF BECKING, COLUMNS, BEAMS AND JOISTS (INCLUDING FIRE PROTECTED MEMBERS) AND MEP SYSTEMS ARE TO BE PAINTED. PER FINISH SCHEDULE, INCLUDING ALL AREAS ABOVE CEILING OR CEILING CRAWLS.
- ALL PRIMARY STRUCTURE TO BE FIREPROOFED IN ACCORDANCE WITH TYPE 1B CONSTRUCTION USING SPRAY APPLIED FIREPROOFING UNLESS OTHERWISE NOTED. TRACK HANGERS AND OTHERSHE DEDICATED, EXPOSED STRUCTURAL MEMBERS TO RECEIVE INTUMESCENT FIREPROOFING. FIREPROOFING SCOPE NOT SHOWN IN ALL DETAILS OR VIEWS. REFER TO LIFE SAFETY DRAWINGS FOR FURTHER INFORMATION.
- ALL RAILING, HANDRAILS AND KNEE WALLS, ARE DELEGATED DESIGN PER SPECIFICATION REQUIREMENTS
- ALL MEP ITEMS ARE SHOWN FOR REFERENCE. REFER TO SPECIFIC TRADE FOR MORE INFORMATION.

055213.A4
104413.A1
104413.A1
131000.A1
221006.B1

STEEL GUARDRAIL TYPE 1, SLAB EDGE MOUNTED - PAINTED
DEFIBRILLATOR CABINET
FIRE EXTINGUISHER CABINET
CLIMBING WALL
FLOOR DRAIN - RE PLUMBING

LEGEND: SCOPES OF WORK

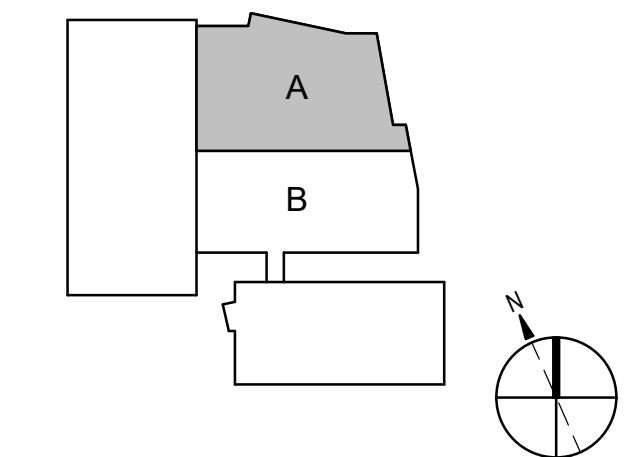




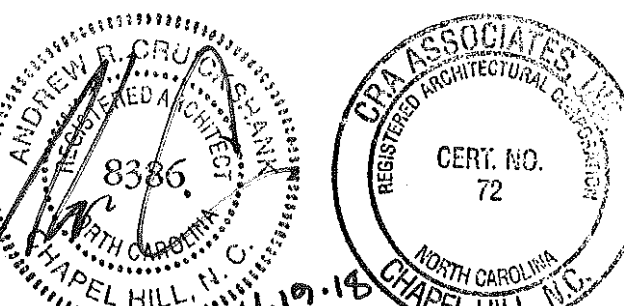
Project
**Carmichael Gymnasium
Addition and Renovation**
2611 Cates Ave, Raleigh NC 27695

Prepared For
NC State University
Raleigh, NC

Key Plan

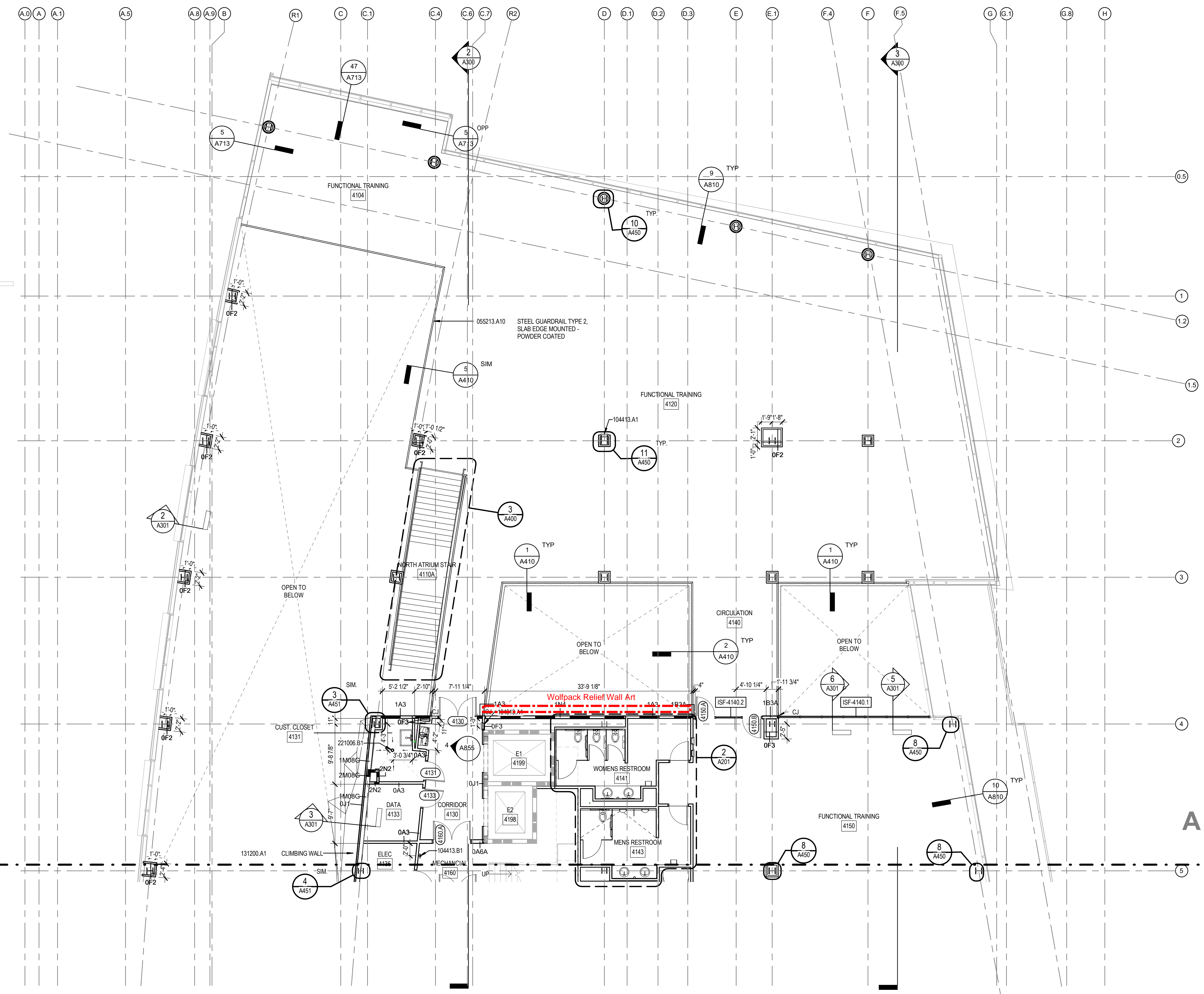


Professional Seals



Review Only - NOT FOR CONSTRUCTION

No. Description Date



1 LEVEL 4, SECTOR A
1/8" = 1'-0"

- TYPICAL PLAN NOTES**
- CONTRACTOR SHALL PREPARE SLAB COORDINATION DRAWINGS FOR EACH FLOOR AND ROOF SLAB. AT A MINIMUM, DRAWINGS SHALL INCLUDE THE FOLLOWING INFORMATION:
 - STRUCTURAL TRIMMING SUPPORTING SLAB SHOWING ACTUAL FLANGE OR BEAM WIDTH
 - EDGE OF SLAB LIMITS
 - EDGE OF SLAB REINFORCEMENT
 - CURTAIN WALL BEARING AND CONNECTION LOCATIONS
 - DOOR OPENING AND SHIFTS
 - FLOOR SLOPES AND PITCHES
 - FINISH REQUIREMENTS FOR ACTUAL FINISH FLOOR ASSEMBLY OR MATERIAL
 - ALL DRAINS, SLEEVES OR OTHER OPENINGS REQUIRED INCLUDING OPENINGS INTENDED TO BE CORE DRILLED AFTER THE STRUCTURAL SLAB IS INSTALLED
 - ARCHITECTURAL SCORE IS DIVIDED INTO VOLUME 1 (EXTERIOR, CORE & SHELL - "AF" SERIES) AND VOLUME 2 (INTERIOR - "A" SERIES). SCOPE SHOWN/HIGHLIGHTED IN VOLUME 2 IS INTENDED TO REPRESENT VOLUME 1 SCOPE AND PROVIDED FOR REFERENCE ONLY.
 - REFER TO THE REFERENCE, SECTOR PLANS AND LIFE SAFETY DRAWINGS FOR LOCATIONS OF FIRE-RESISTANCE RATED PARTITIONS AND NON-FIRE-RESISTANCE RATED SMOKE PARTITIONS.
 - REFER TO A410 AND A450 SERIES FOR TYPICAL INTERIOR PARTITION TYPES AND DETAILS INCLUDING REINFORCEMENT AND/OR BLOCKING REQUIREMENTS FOR WALL MOUNTED ITEMS
 - REFER TO A450 SERIES FOR TYPICAL MOUNTING LOCATIONS AND HEIGHTS FOR TOILET ACCESSORIES, EQUIPMENT, WALL SPECIALTY DESIGNATIONS, VISUAL DISPLAY BOARDS, TYPICAL TOILET ROOM ELEVATIONS, AND STALL TYPES, ETC.
 - REFER TO A450 SERIES FOR FINISH PLANS AND FLOOR PATTERNS. REFER TO A450 FOR FINISH LEGEND.
 - ALLOY PARTITIONS WITH COLUMN OR WALL CENTERLINE, UNLESS OTHERWISE NOTED. DIMENSIONS ARE FROM FACE OF FINISH TO FACE OF FINISH, I.E. FACE OF GYP/PLUM BOARD OR MASONRY OR FROM FACE OF EXISTING CONDITION OR FROM COLUMN CENTERLINE, UNLESS OTHERWISE NOTED. DIMENSIONS NOTED AS "CLEAR" SHALL BE FROM FINISH FACE TO FINISH FACE, (I.E. FACE OF CERAMIC TILE TO FACE OF CERAMIC TILE). VERIFY ALL EXISTING DIMENSIONS IN THE FIELD.
 - ALL INTERIOR FLOOR SLOPES TO DRAIN TO BE 1/8" PER 1'-0" (2%), UNLESS OTHERWISE NOTED
 - PROVIDE FIRE TREATED WOOD BLOCKING OR STEEL FLAT STRAP PER SPECIFICATIONS AND BACKING WALL BUMPERS, AND ALL OTHER WALL MOUNTED EQUIPMENT OR DEVICES.
 - ALL EXPOSED STRUCTURAL STEEL MEMBERS, INCLUDING BUT NOT LIMITED TO, FLOOR AND/OR ROOF BECKING, COLUMNS, BEAMS AND JOISTS (INCLUDING FIRE PROTECTED MEMBERS) AND MEP SYSTEMS ARE TO BE PAINTED. PER FINISH SCHEDULE, INCLUDING ALL AREAS ABOVE TRACKING OR CLUCTE CEILING.
 - ALL PRIMARY STRUCTURE TO BE FIREPROOFED IN ACCORDANCE WITH TYPE 1B CONSTRUCTION USING SPRAY APPLIED FIREPROOFING UNLESS OTHERWISE NOTED. TRACK HANGERS AND OTHERWISE DESIGNATED, EXPOSED STRUCTURAL MEMBERS TO RECEIVE INTUMESCENT FIREPROOFING. FIREPROOFING SCOPE NOT SHOWN IN ALL DETAILS OR VIEWS. REFER TO LIFE SAFETY DRAWINGS FOR FURTHER INFORMATION.
 - ALL RAILINGS, HANDRAILS AND KNEE WALLS, ARE DELEGATED DESIGN PER SPECIFICATION REQUIREMENTS
 - ALL MEP ITEMS ARE SHOWN FOR REFERENCE. REFER TO SPECIFIC TRADE FOR MORE INFORMATION.

- 055213.A10 STEEL GUARDRAIL TYPE 2, SLAB EDGE MOUNTED - POWDER COATED
- 104413.A1 DEFIBRILLATOR CABINET
- 104413.B1 FIRE EXTINGUISHER CABINET
- 131200.A1 CLIMBING WALL
- 221006.B1 FLOOR DRAIN - RE PLUMBING

LEGEND: SCOPES OF WORK

- EXISTING BUILDING TO REMAIN
- NO WORK, PROTECT AS REQUIRED.
- FIRE ALARM AND SPRINKLER WORK ONLY, PROTECT AS REQUIRED.

LEGEND: WALL RATINGS

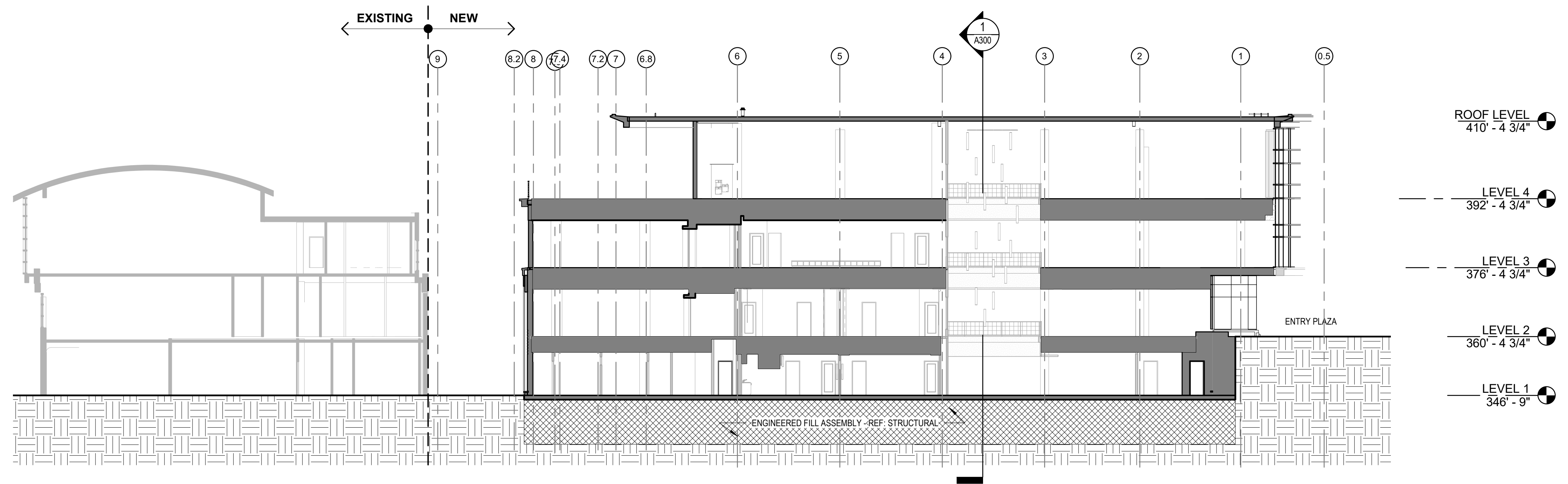
- 1 HR RATED PARTITION
- 2 HR RATED PARTITION

Date: NOVEMBER 19, 2018
Phase: CONSTRUCTION DOCUMENTS
Project No: #201620011 Code: 41624
Item: 302 SCO ID: 16-15928-03A
Package No. 2B
Volume No. 2

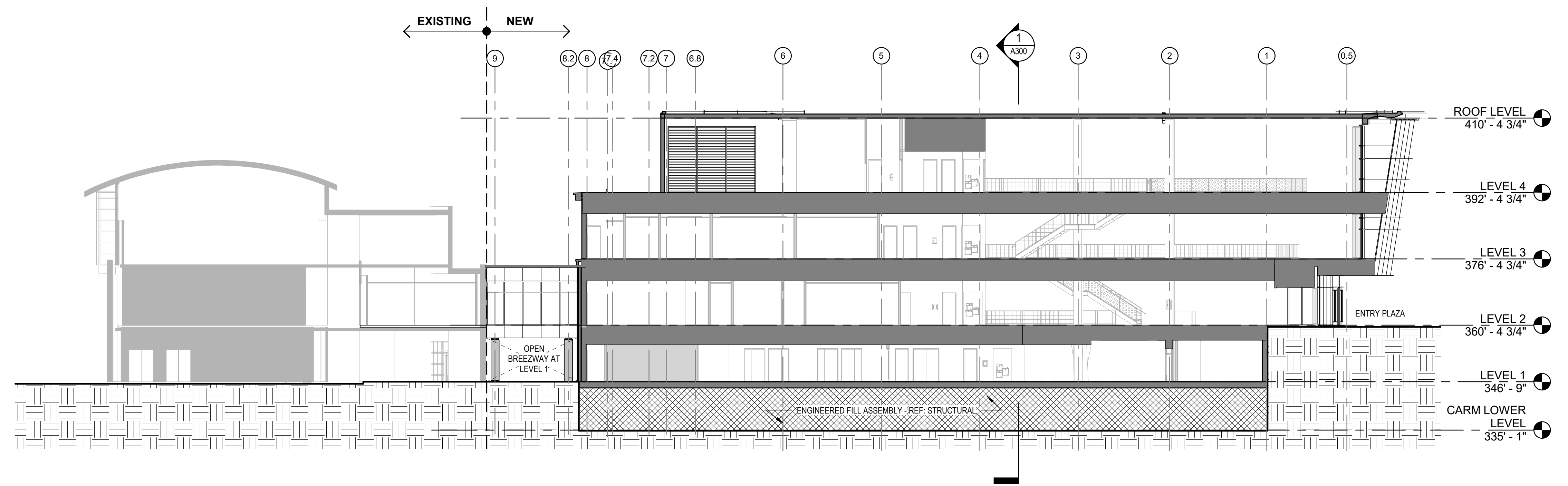
FLOOR PLAN - LEVEL 4, SECTOR A

Original drawing is 42 x 30. Do not scale contents of this drawing.
Sheet Number

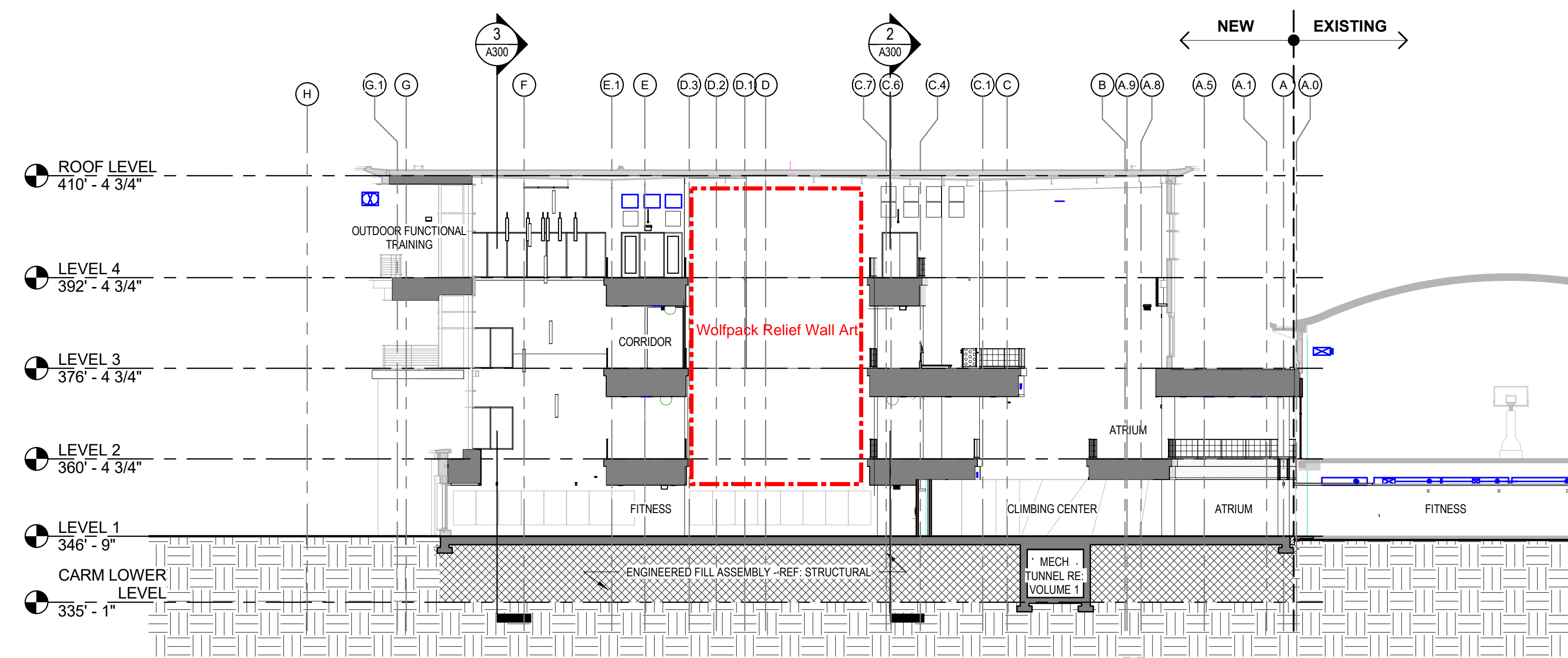
A104-A



3 BUILDING SECTION
1/16" = 1'-0"



2 BUILDING SECTION
1/16" = 1'-0"



1 BUILDING SECTION
1/16" = 1'-0"

- TYPICAL PLAN NOTES**
- CONTRACTOR SHALL PREPARE SLAB COORDINATION DRAWINGS FOR EACH FLOOR AND ROOF SLAB. AT A MINIMUM, DRAWINGS SHALL INCLUDE THE FOLLOWING INFORMATION:
 - STRUCTURAL FRAMING SUPPORTING SLAB SHOWING ACTUAL FLANGE OR BEAM WIDTH
 - EDGE OF SLAB LIMITS
 - EDGE OF SLAB REINFORCEMENTS
 - CURTAIN WALL BEARING AND CONNECTION LOCATIONS
 - FLOOR OPENINGS AND SHIFTS
 - FLOOR SLOPES AND PITCHES
 - FINISH REQUIREMENTS FOR ACTUAL FINISH FLOOR ASSEMBLY OR MATERIAL
 - ALL DRAINS, SLEEVES OR OTHER OPENINGS REQUIRED INCLUDING OPENINGS INTENDED TO BE CORE DRILLED AFTER THE STRUCTURAL SLAB IS INSTALLED
 - ARCHITECTURAL SCOPES IS DIVIDED INTO VOLUME 1 (EXTERIOR, CORE & SHELL - "AF" SERIES) AND VOLUME 2 (INTERIOR - "I" SERIES). SCOPE SHOWN HATCHED IN VOLUME 2 IS INTENDED TO REPRESENT VOLUME 2 SCOPE AND PROVIDED FOR REFERENCE ONLY.
 - REFER TO THE REFERENCE, SECTOR PLANS AND LIFE SAFETY DRAWINGS FOR LOCATIONS OF FIRE-RESISTANCE RATED PARTITIONS AND NON-FIRE-RESISTANCE RATED SMOKE PARTITIONS.
 - REFER TO A310 AND A311 SERIES FOR TYPICAL, INTERIOR PARTITION TYPES AND DETAILS INCLUDING REINFORCEMENT AND/OR BLOCKING REQUIREMENTS FOR WALL MOUNTED ITEMS.
 - REFER TO A312 SERIES FOR TYPICAL MOUNTING LOCATIONS AND HEIGHTS FOR TOILET ACCESSORIES, EQUIPMENT, WALL SPECIALTY DESIGNATIONS, VISUAL DISPLAY BOARDS, TYPICAL TOILET ROOM ELEVATIONS, AND STALL TYPES, ETC.

- REFER TO A305 SERIES FOR FINISH PLANS AND FLOOR PATTERNS. REFER TO A303 FOR FINISH LEGEND.
- ALSO PARTITIONS WITH COLUMN OR WALL CENTERLINE, UNLESS OTHERWISE NOTED. DIMENSIONS ARE FROM FACE OF FINISH TO FACE OF FINISH, I.E. FACE OF GYPSUM BOARD OR MASONRY OR FROM FACE OF EXISTING CONDITION OR FROM COLUMN CENTERLINE, UNLESS OTHERWISE NOTED. DIMENSIONS NOTED AS "CLEAN" SHALL BE FROM FINISH FACE TO FINISH FACE, (I.E. FACE OF CERAMIC TILE TO FACE OF CERAMIC TILE). VERIFY ALL EXISTING DIMENSIONS IN THE FIELD.
- ALL INTERIOR FLOOR SLOPES TO DRAIN TO BE 1/8" PER 1'-0" (2%), UNLESS OTHERWISE NOTED
- PROVIDE FIRE-TREATED WOOD BLOCKING OR STEEL FLAT STRAP PER SPECIFICATIONS AND BACKING WALL BUMPERS, AND ALL OTHER WALL MOUNTED EQUIPMENT OR DEVICES.
- ALL EXPOSED STRUCTURAL STEEL MEMBERS, INCLUDING BUT NOT LIMITED TO FLOOR AND/OR ROOF BECKING, COLUMNS, BEAMS AND JOISTS (INCLUDING FIRE-PROTECTED MEMBERS) AND MEP SYSTEMS ARE TO BE PAINTED. PER FINISH SPECIFICATIONS, INCLUDING ALL AREAS ABOVE CEILING OR UNDER CEILING.
- ALL PRIMARY STRUCTURE TO BE FIREPROOFED IN ACCORDANCE WITH TYPE 1B CONSTRUCTION USING SPRAY APPLIED FIREPROOFING UNLESS OTHERWISE NOTED. TRACK HANGERS AND OTHERS BE DESIGNATED, EXPOSED STRUCTURAL MEMBERS TO RECEIVE INTUMESCENT FIREPROOFING. FIREPROOFING SCOPE NOT SHOWN IN ALL DETAILS OR VIEWS. REFER TO LIFE SAFETY DRAWINGS FOR FURTHER INFORMATION.
- ALL RAILINGS, HANDRAILS AND KNEE WALLS, ARE DELEGATED DESIGN PER SPECIFICATION REQUIREMENTS.
- ALL MEP ITEMS ARE SHOWN FOR REFERENCE. REFER TO SPECIFIC TRADE FOR MORE INFORMATION.

LEGEND: SCOPES OF WORK

- [Dotted pattern] EXISTING BUILDING TO REMAIN.
- [Hatched pattern] NO WORK, PROTECT AS REQUIRED.
- [Cross-hatched pattern] FIRE ALARM AND SPRINKLER WORK ONLY. PROTECT AS REQUIRED.

LEGEND: WALL RATINGS

- [Solid grey box] 1 HR RATED PARTITION
- [Hatched box] 2 HR RATED PARTITION

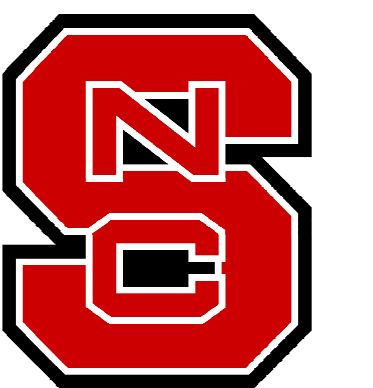


222 Cloister Ct.
Chapel Hill, NC 27514
919.401.8586



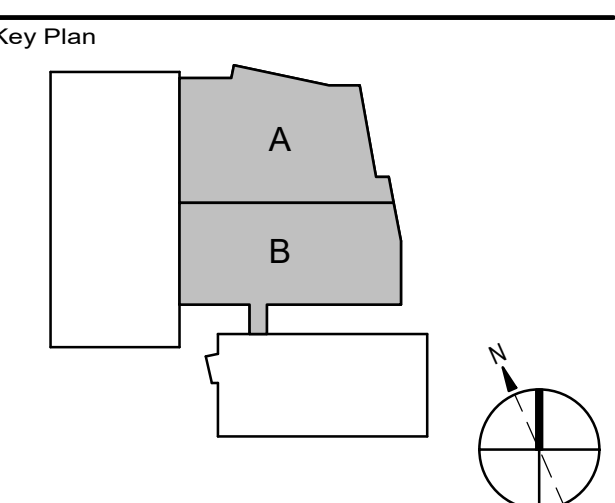
Design Consultant
300 West 22nd Street
Kansas City, MO 64108 USA
t+1 816 472 3360 f+1 816 472 2100

All reproduction & intellectual property rights reserved © 2018
In Association with



Project
**Carmichael Gymnasium
Addition and Renovation**
2611 Cates Ave, Raleigh NC 27695

Prepared For
NC State University
Raleigh, NC



Professional Seals

Review Only - NOT FOR CONSTRUCTION

No.	Description	Date

Date: NOVEMBER 19, 2018
Phase: CONSTRUCTION DOCUMENTS
Project No: #201620011 Code: 41624
Item: 302 SCO ID: 16-15928-03A
Package No. 2B
Volume No. 2

Sheet Title
BUILDING SECTIONS
Original drawing is A2 x 30. Do not scale contents of this drawing.
Sheet Number **A300**







