

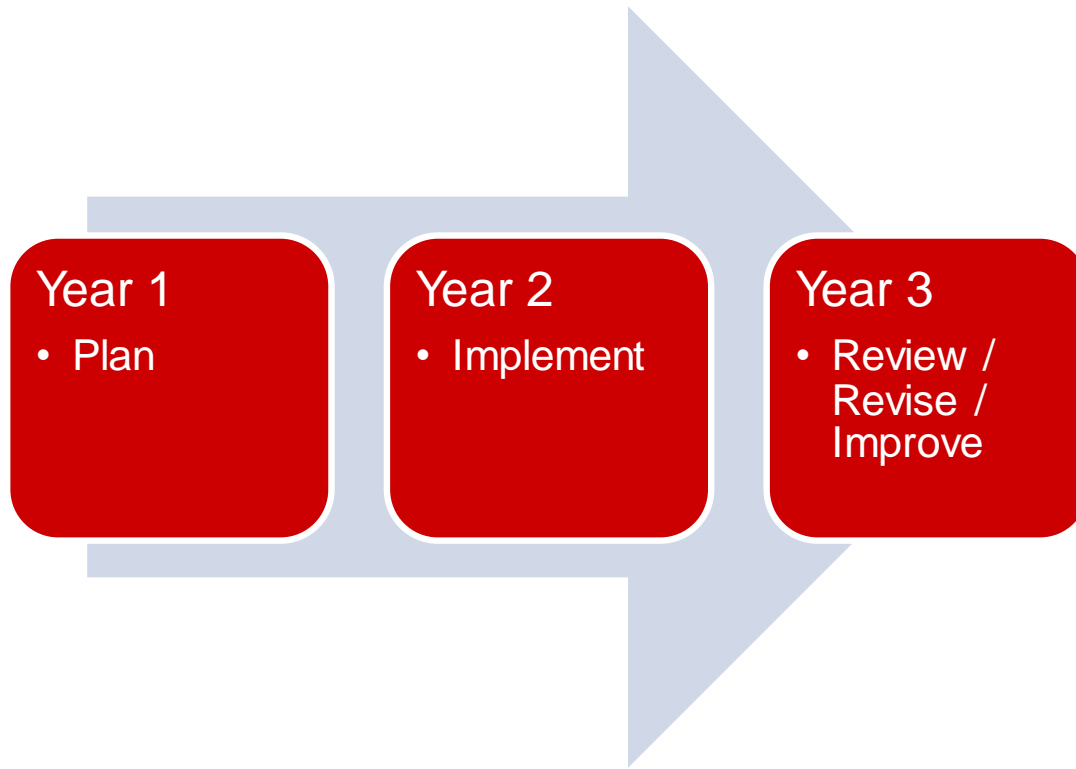
Enterprise GIS Steering Committee Meeting

February 6, 2023

Agenda

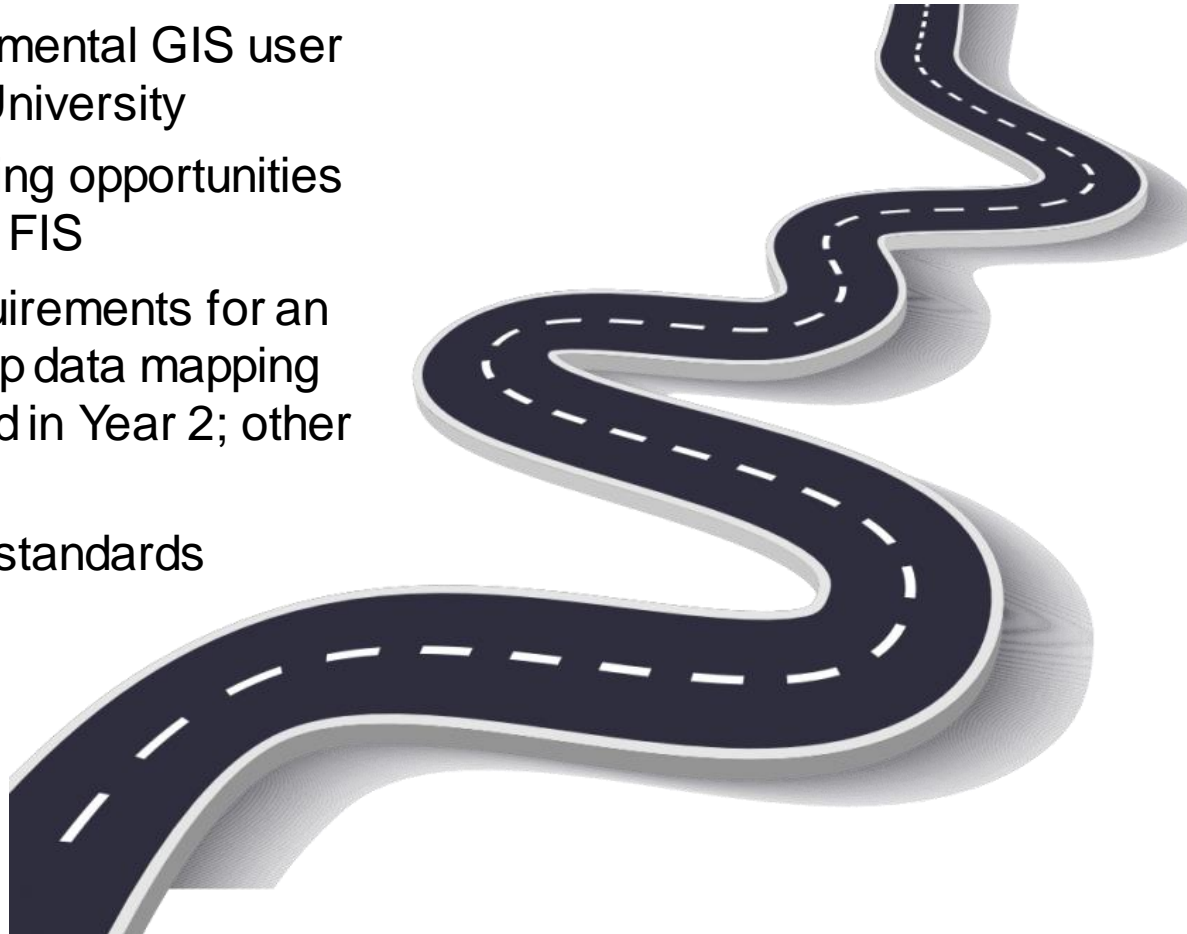
- 1. Welcome and Introductions**
- 2. Roadmap**
- 3. Demonstrations**
- 4. Other Business**

Roadmap Review



Roadmap Summary – Year 1 Activities

- Develop an inter-departmental GIS user community across the University
- Develop additional training opportunities for GIS users outside of FIS
- Analyze and define requirements for an upcoming one-stop-shop data mapping application to be created in Year 2; other advanced initiatives
- Review and revise GIS standards documentation



Enterprise GIS Champions

•Campus Planning & Strategic Investment

- Facilities Information Systems (FIS) / GIS
 - Dave Wynne
 - Sally Rau
 - Matt Laska
 - Laurel Krynock
- University Surveyor
 - Wayne Moore
- Infrastructure Planning
 - Joe Riley
- Sustainability
 - Jessica Bast

•Campus Operations & Maintenance

- Utilities & Engineering
 - Andrew Futrell
- Grounds & Building Services
 - Dawn Currin
- Waste Reduction and Recycling
 - Adam Bensley
- Building Maintenance & Operations
 - Jeremy Christie
- Energy Management
 - Zack Wenning

•Business Systems

- Steve Johnston

•Transportation

- Dave Hammerman

•Emergency Preparedness & Strategic Initiatives

- Amy Orders
- Brian Garner

•EH&S - Environmental Affairs

- Karen Trimberger
- Ben Lingley

•University Real Estate and Development

- Jessie Askew
- Elizabeth Chesnut
- Jude Desnoyer

•Office of Information Technology

- ComTech
 - Brandon Faircloth

•NC State Libraries

- Jeff Essic

Outreach

- GIS Champions Group
- MGIST Capstone Projects
 - Tree Inventory
 - Electric Vehicle Charging Station Locations
 - Pollinator Gardens
- GIS Day
- Training
 - GIS and web app specific training for Grounds
 - Champions Group folks have requested training

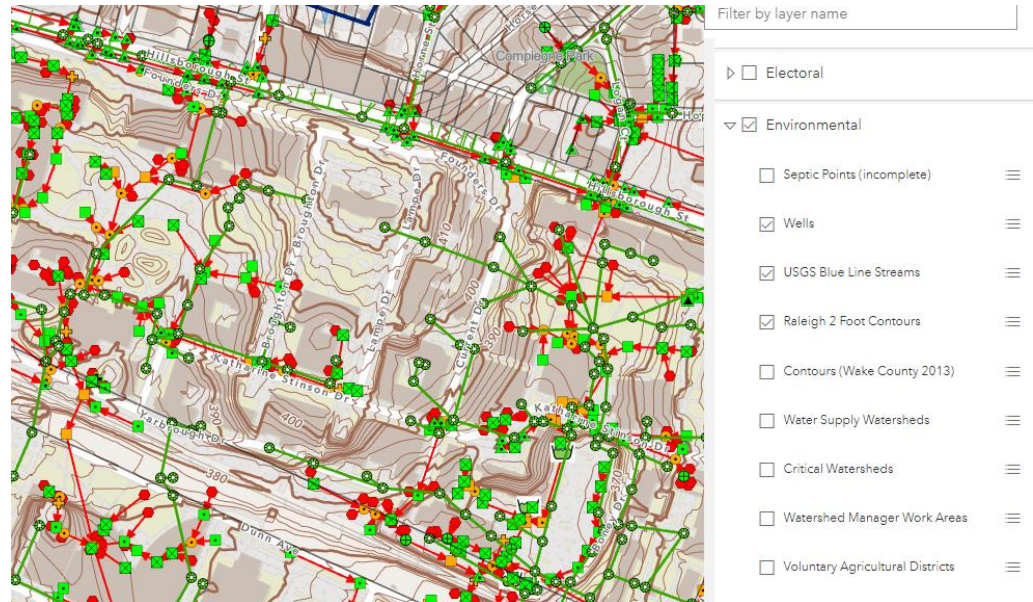


One-Stop Data Mapping Application Functional Requirements

- Overarching goals
 - Provide a one-stop shop for Enterprise GIS data
 - Consolidate existing applications
 - Add new data and functionality

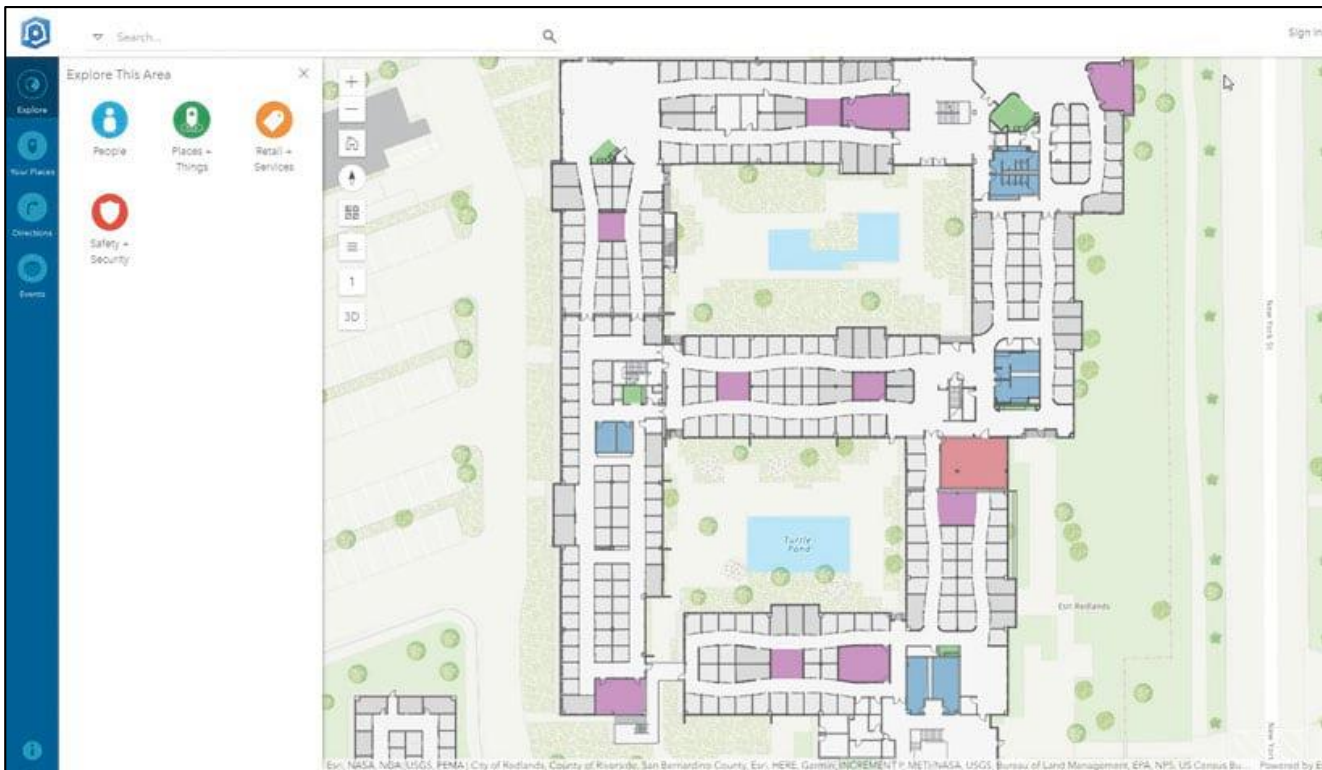
- Year 1
 - Gather and prioritize functional requirements
 - Identify next steps

- Year 2
 - Create and implement



ArcGIS Indoors Trial

- Indoor GIS for mapping, wayfinding and space management
- Testing floor plan conversion (CAD to GIS) and capabilities with 30-day free trial
- More Info: <https://www.esri.com/en-us/arcgis/products/arcgis-indoors/overview>



Retrieved from: <https://www.esri.com/about/newsroom/arcnews/enable-engage-and-empower-the-workplace-with-arcgis-indoors/>
Jan 31, 2023

Demo: Enterprise GIS Portal


<https://go.ncsu.edu/gisportal>


[Home](#)
[Gallery](#)
[Map](#)
[Scene](#)
[Groups](#)

[Sign In](#)


NC STATE UNIVERSITY

Facilities Division - Enterprise GIS







Utilities Viewer



Campus Map



Stormwater Viewer



Enterprise GIS Story Map

Welcome to NC State University Enterprise GIS

The NC State Enterprise GIS group, housed within the Office of the University Architect, maintains and updates a central repository of GIS data and maps for Facilities as well as other departments and groups at NC State.

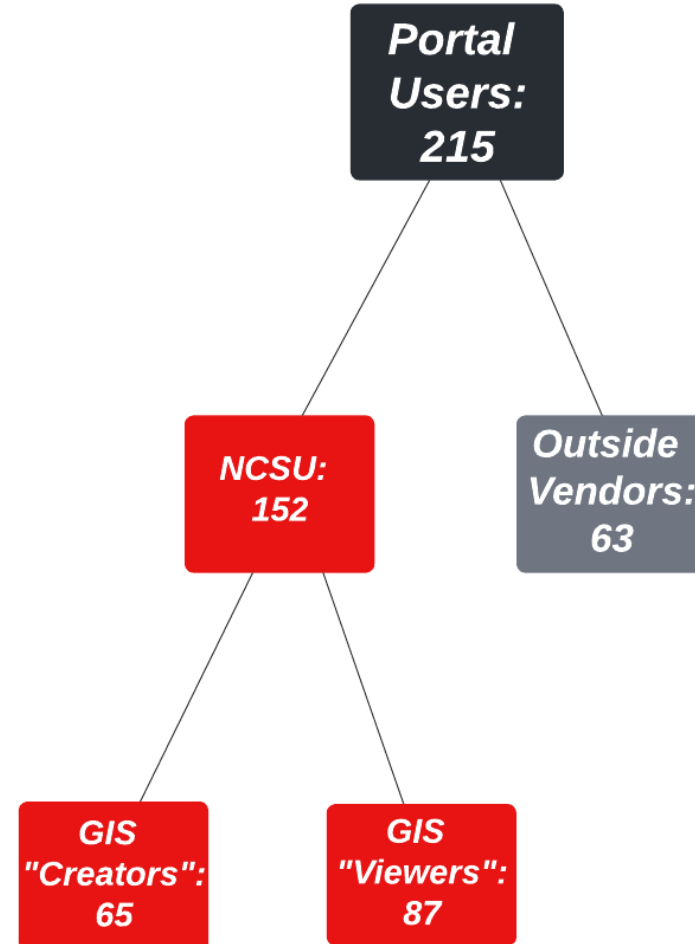
Disclaimer

NC State University makes every effort to produce and publish the most current and accurate content possible. However, the maps and data are produced for informational purposes, and are NOT surveys. The information is compiled from various sources and not intended for official use or legal reference. The user of this site should not solely rely on the data provided herein. The information provided may not be used for commercial purposes or sold.

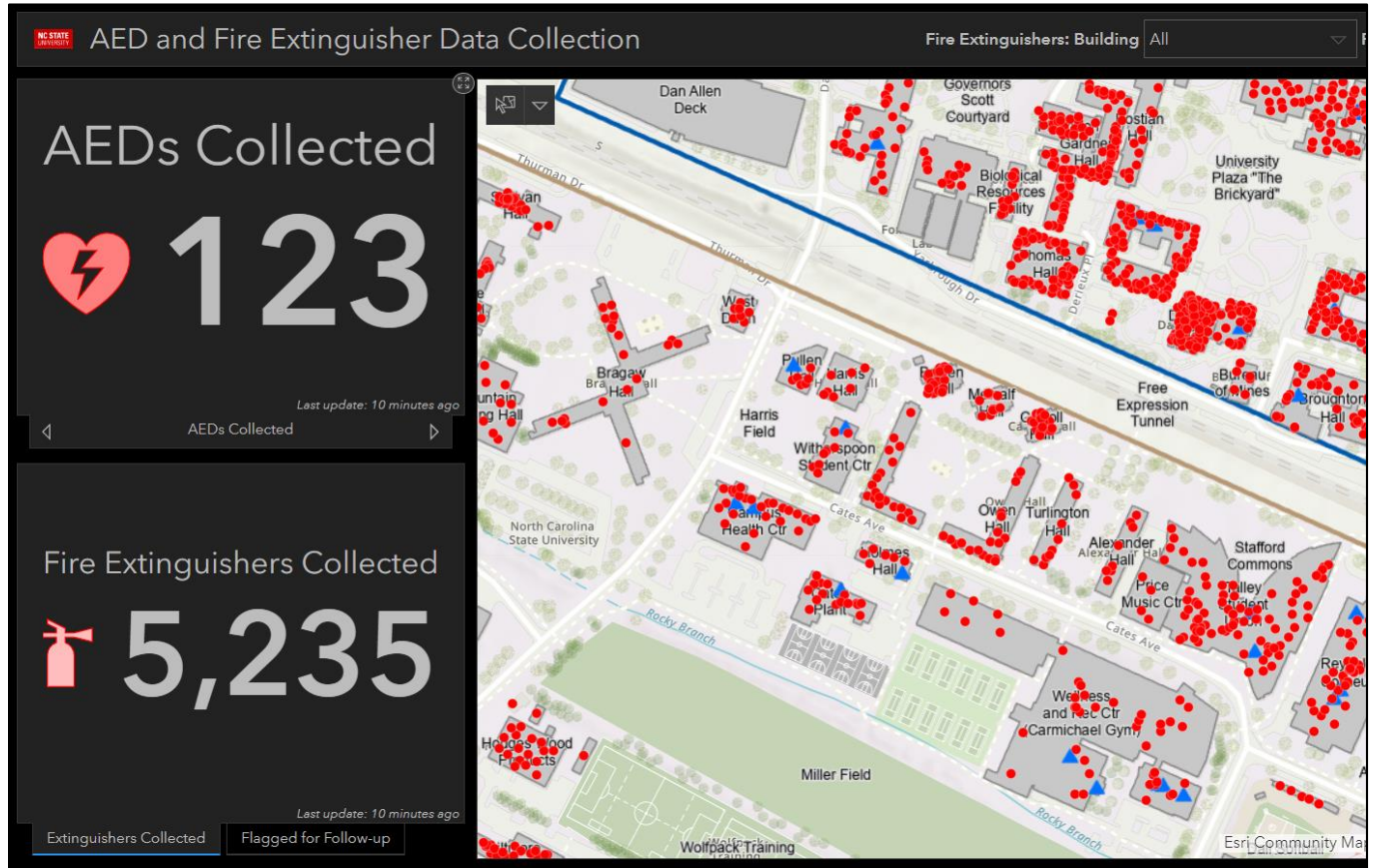
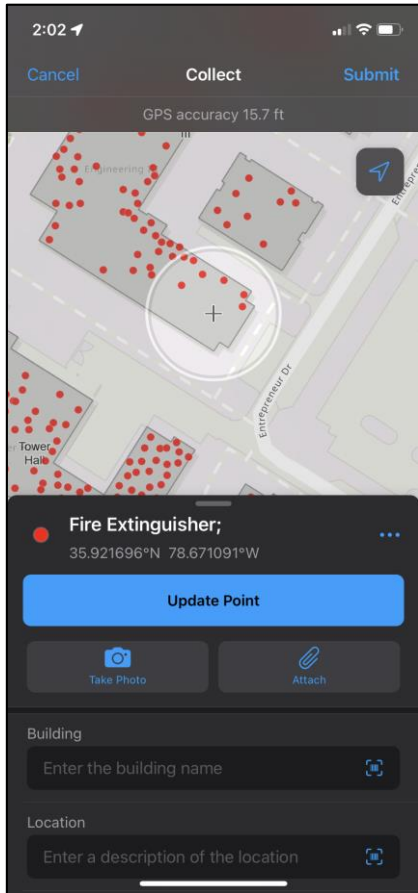
[Contact Us](#)

Enterprise GIS Portal User Statistics

- Growing user base of Enterprise GIS apps
- 100+ new users (57 NCSU, 45 vendors) since system upgrade at the beginning of 2022
- GIS “Creators”: admin, data editors, users marking up, adding or updating data with field collection devices (e.g. Redline, fire extinguishers, etc)
- GIS “Viewer”: users viewing secured web mapping applications (Utilities Viewer, WolfTracts, etc)



Demo: AED & Fire Extinguisher Data Collection



Demo: BM&O and Housekeeping Web App

NC STATE **BM&O and Housekeeping Zone Assignments Web App**

Housekeeping

BM&O

Click button to toggle the map view between Housekeeping and BM&O

Filter Map View

▼ Filter Buildings

Housekeeping Zone

- All -

Select a HK zone and select "Apply" to view assigned buildings on the map.

Apply
Cancel

Zone Information

Flitts-Woolard Hall (782E)
 Address: 915 Partners Way
[Get Directions](#)

BM&O Maintenance Zone Info
 Zone: 8
 Zone Manager: Tom Beird
 Manager Phone: 513-3118
 Manager Email: tcbaird@ncsu.edu

Housekeeping Zone Info
 Zone: CC1
 Zone Manager: Matthew High
 Manager Cell Phone: 919-801-2938
 Manager Office Phone: 919-515-9921
 Manager Email: mmhigh@ncsu.edu
[Zone Manager Webpage](#)
[Housekeeping Zone Map](#)

Search by building name or number

Housekeeping Zone Assignments

Zone ID

- A1
- A2
- A3N
- A4N
- A5
- A6
- A4D
- A8
- A9N
- CBC1
- CBC2
- AH
- CC1
- CC2
- H1
- H2
- H3
- H4
- H5
- H6
- AS1

Esri Community Maps Contributors, North Carolina State University, City of Raleigh, Wake County, State of North Carolina DOT, Esri, HERE, Garmin, SafeGraph, GeoTechnologies, Inc, METI/NASA, USGS, EPA, NPS, US Census B... Powered by Esri

Demo: Inclement Weather Map Viewer

NCSU Inclement Weather Map Viewer
North Ca

Pavement Status

Pavement Priority Levels

Buildings Priority Levels

Disclaimer: This map depicts information on pavement status as provided by Grounds crews. Information may not reflect actual, real-time surface conditions. Please exercise caution when using the streets, sidewalks, and parking lots.

Hazard Areas

- ⚠ Active
- ⚡ Resolved
- No Status

Street Centerlines

- Completed - Final Pass
- Completed - First Pass
- In Progress
- Not Clear

Parking Lots

- Completed - Final Pass
- Completed - First Pass
- In Progress
- Not Clear

Esri Community Maps Contributors, North Carolina State University, City of

Other Business