

# Centennial Campus Town Hall Meeting

NC State University

-Fitts Woolard Hall

-Plant Sciences Building

# Traffic Impacts



Walkway Path

Construction Limits

Temporary Utility Work

Road Closed Sign

No Thru Traffic Sign - Closed Ahead

Traffic Flow to Parking Decks

Pedestrian Access from Partners Way Deck



# Today's Presentation

- Project Overview
- Traffic/Road Disruptions
- Planned Utility Outages

# Fitts-Woolard Hall Overview

---

<https://www.engr.ncsu.edu/fwh/>

Fitts Industrial and Systems Engineering

Civil, Construction and Environmental Engineering

Dean's Administration

- 224,000 square feet
- Cast-in Place Concrete & Structural Steel Frame
- Brick Veneer, Curtainwall, Metal Panels
- Typical MEP with Lab Services – AHU's on Roof
- Lab Spaces, Classrooms, Offices

# Project Overview

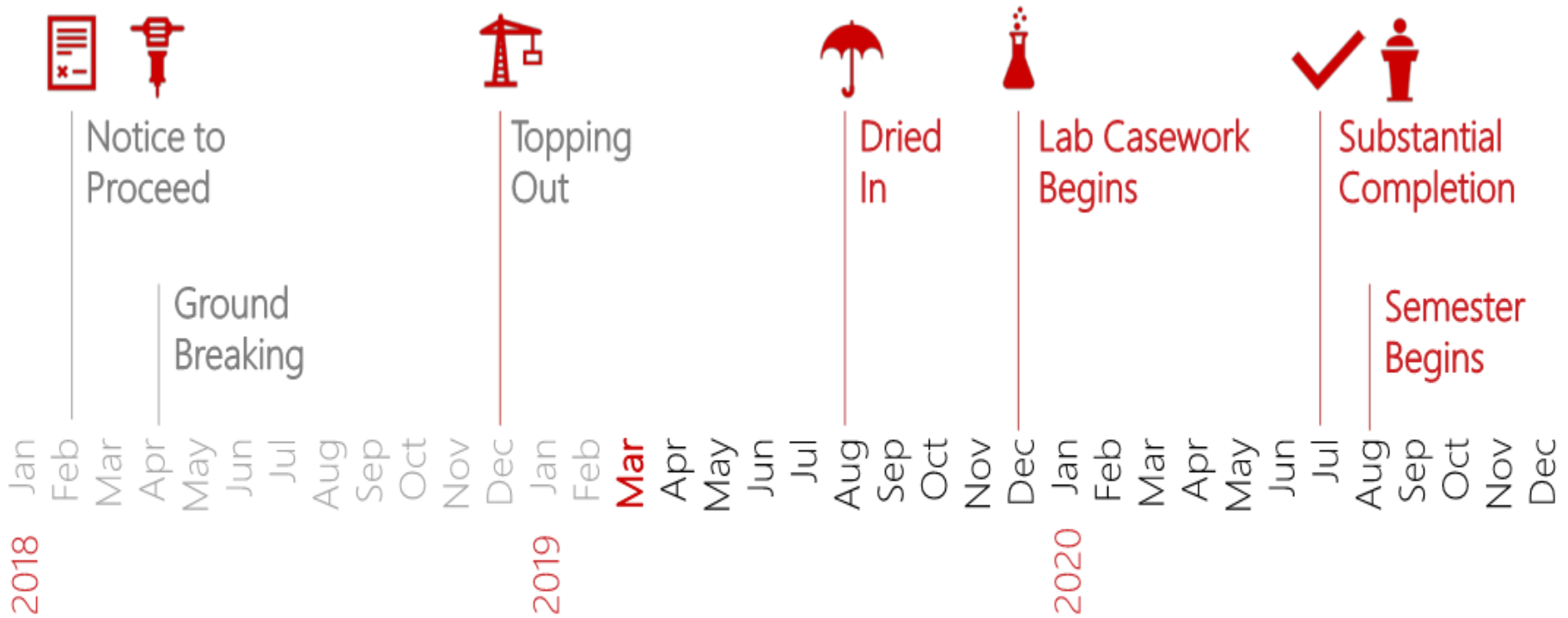


# Project Overview

---



# Construction Schedule



# March 2019

---



www.sky6itelimages.com

Engineering Building Oval

3-19-19

# March 2019

---










www.sky51images.com

Engineering Building Oval

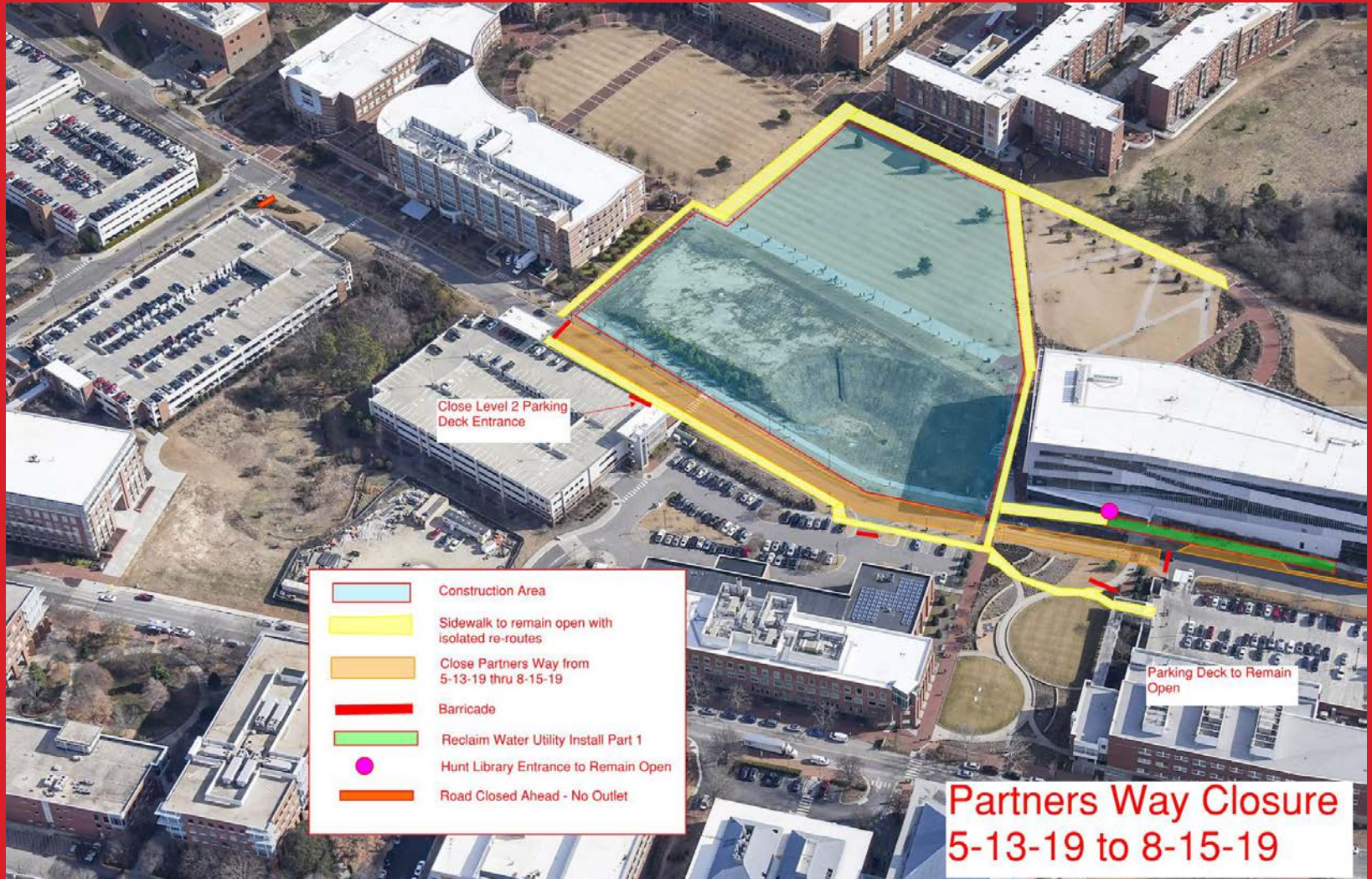
3-19-19

# Traffic Impacts

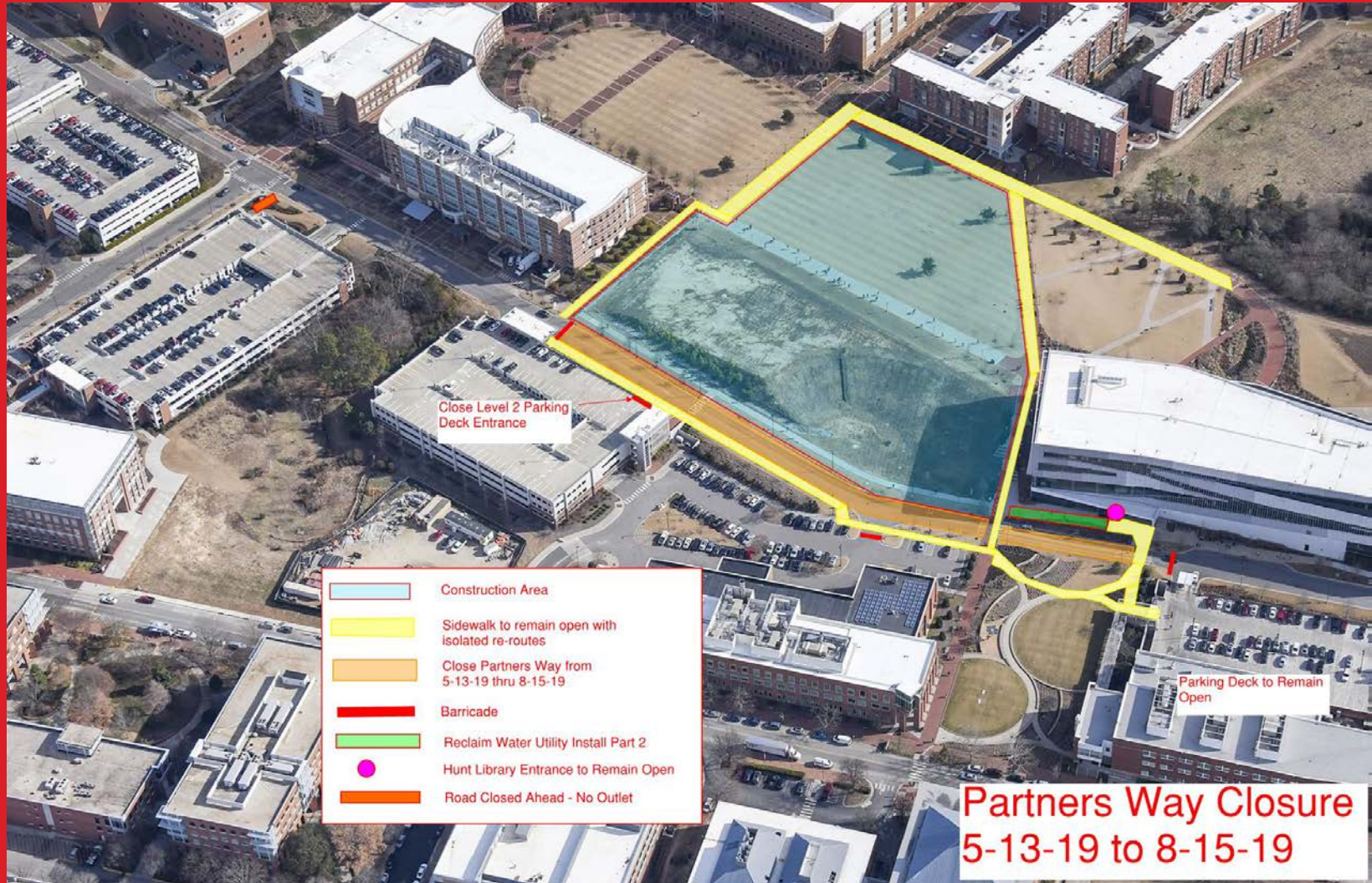


 Walkway Path	 Traffic Flow to Parking Decks
 Construction Limits	 Pedestrian Access from Partners Way Deck
 Temporary Utility Work	
 Road Closed Sign	
 No Thru Traffic Sign - Closed Ahead	

# Fitts-Woolard Traffic Impacts



# Fitts-Woolard Traffic Impacts



# Fitts-Woolard Traffic Impacts



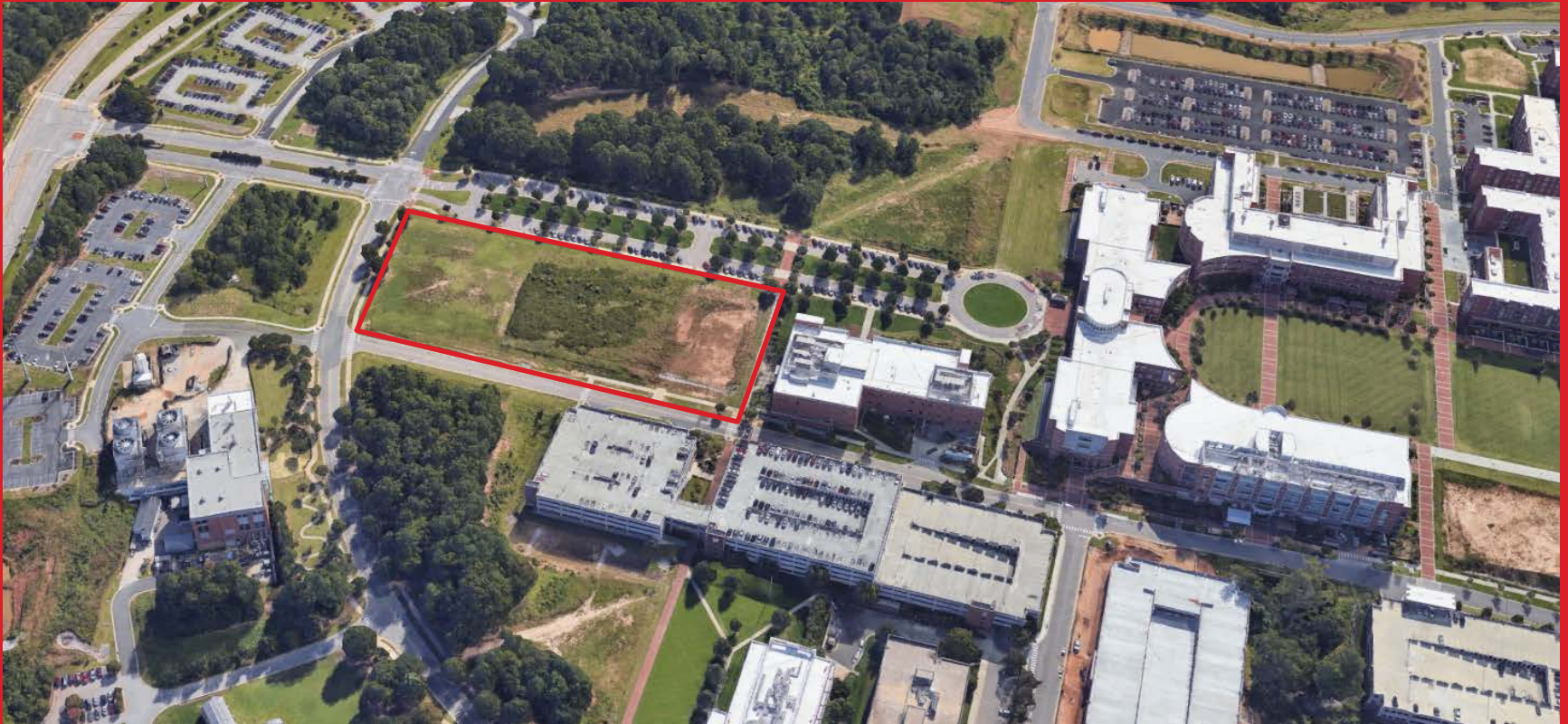
# Plant Science Building

<https://cals.ncsu.edu/initiatives/plant-sciences-initiative/>

## College of Agricultural and Life Sciences - Multi-Disciplinary Research

- 184,000 square feet
- Structural Steel Frame
- Brick Veneer, Curtainwall, Metal Panels, Terracotta Panels
- Rooftop Greenhouse/Headhouse with BL3-P and BSL-3
- Open Lab & Specialty Spaces, Offices

# Project Overview



# Project Overview



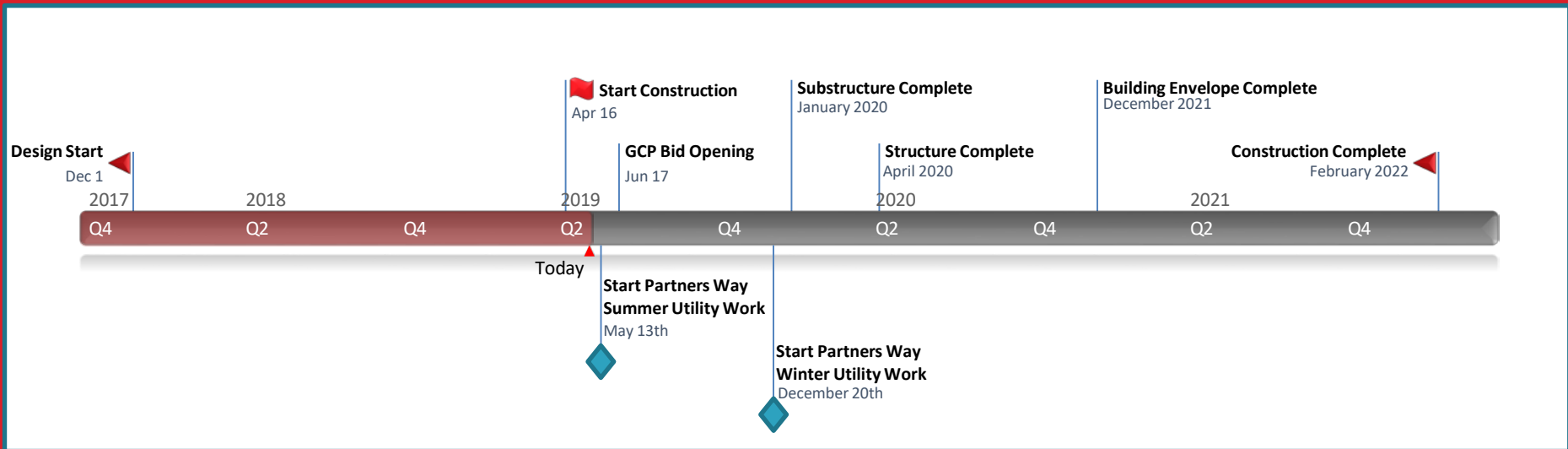
# Project Overview



# Project Overview

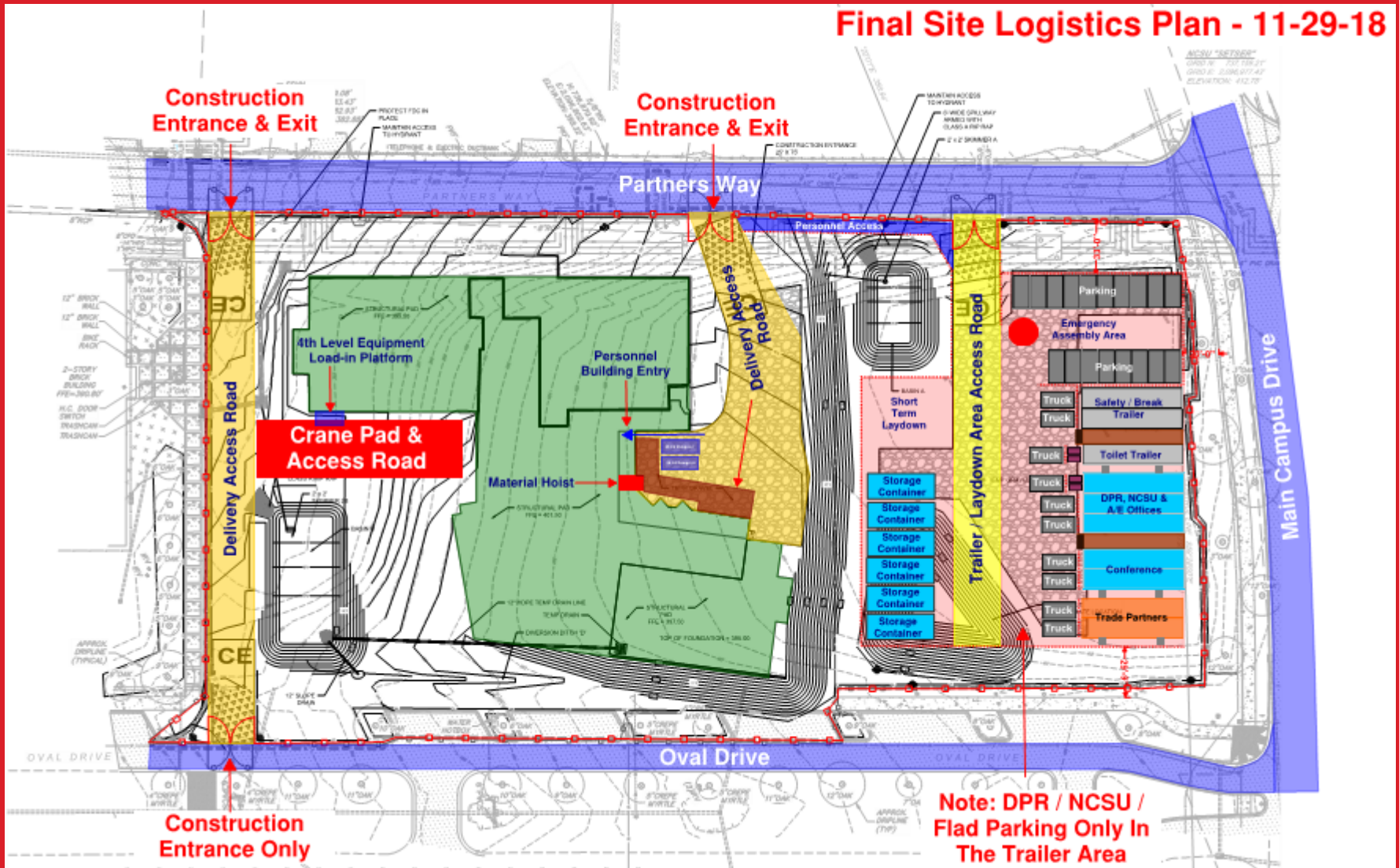


# Construction Schedule





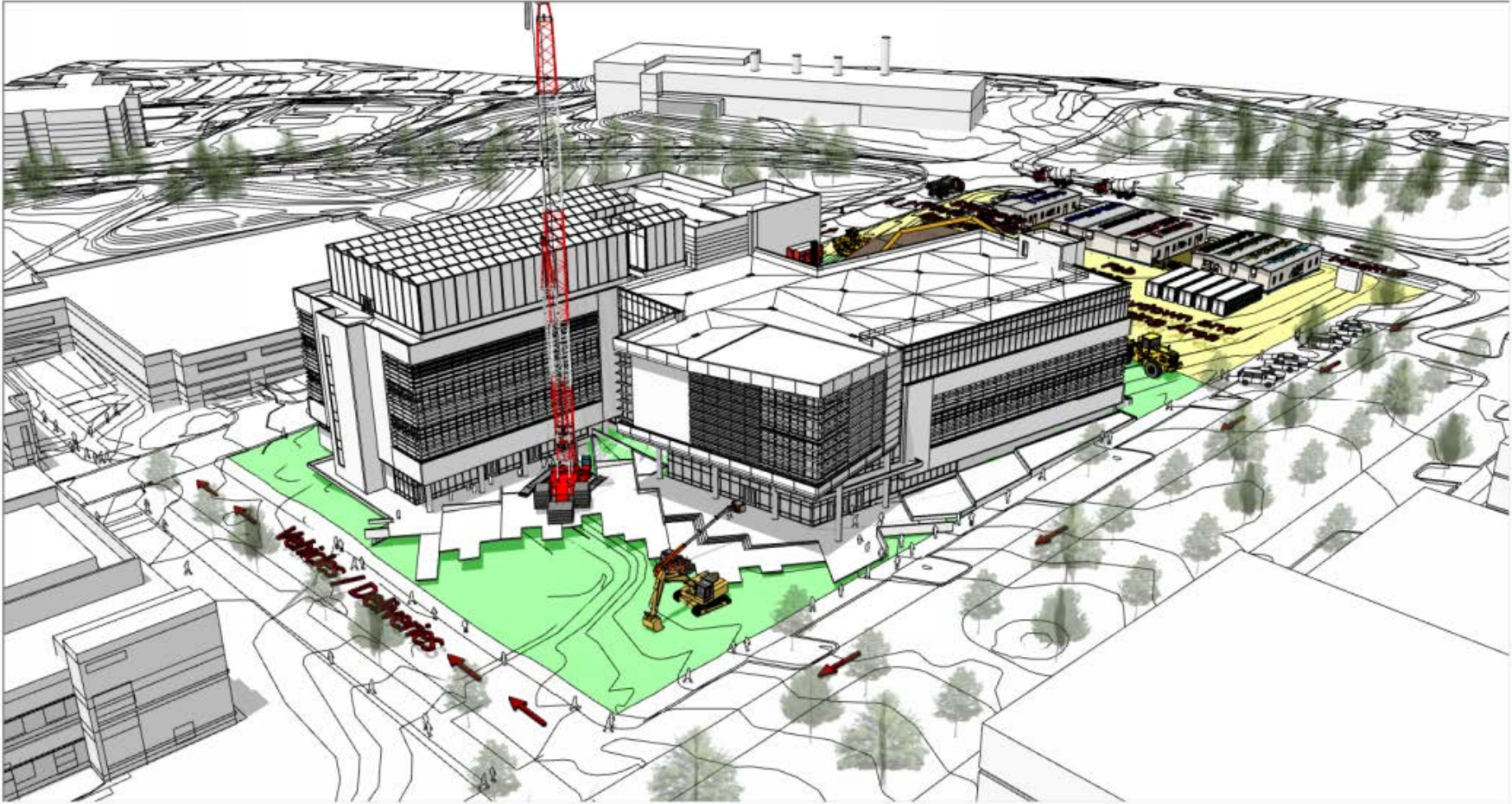
# Final Site Logistics Plan - 11-29-18



Ground View from the Central Plant (Northwest)



Aerial from the Southeast



# Overall Traffic Impacts



# Plant Sciences Traffic Impacts



# Plant Sciences Traffic Impacts

## Partner's Way & Main Campus Drive Upcoming Traffic Impacts



# Plant Sciences Traffic Impacts

## Partner's Way & Main Campus Drive Upcoming Traffic Impacts



## Utility Impacts

---

### Campus Power Shutdown

- Sunday 6/2/19, 7:30 a.m. – 3:30 p.m.

### Campus Steam Shutdown Outages

- Saturday 6/1/19 – 24 hour outage, beginning 5:30 p.m. on Saturday until 5:30 p.m. on Sunday.
- Saturday 6/15/19 – 24 hour outage , beginning 5:30 p.m. on Saturday until 5:30 p.m. on Sunday.

### Campus Chilled Water Shutdown

- Winter 2019/2020

# Questions & Answers

---

**NC STATE**

**THINK AND DO**

**THE**

**EXTRAORDINARY**



The Campaign for NC State